

3. SANTA CLARA COUNTY VECTOR CONTROL DISTRICT

AGENCY OVERVIEW

Santa Clara County Vector Control District (SCCVCD) was formed in May 1988 as a dependent special district of Santa Clara County. The District is a part of the County's Department of Environmental Health. The District provides mosquito, rat and other vector and wildlife control services throughout Santa Clara County. A service review for the District was last conducted in 2006.

The principal act that governs the District is the Mosquito Abatement and Vector Control District Law, originally called Mosquito Abatement Act of California of 1915, that was revised in 2003 (SB 1588).³³ The principal act empowers such districts to conduct surveillance programs and other studies of vectors and vector-borne diseases, take appropriate actions to prevent the occurrence of vectors and vector-borne diseases, and take necessary actions to abate or control vectors and vector-borne diseases.³⁴ Districts must apply and obtain LAFCO approval to exercise latent powers, that is, those services authorized by the principal act but not provided by the district by the end of 2000.³⁵

Boundaries

The boundary of SCCVCD is countywide and includes 1,304 square miles.

Sphere of Influence

During the most recent SOI update in 2006, LAFCO reaffirmed the District's existing coterminous SOI.

³³ California Health and Safety Code § 2000-2093

³⁴ California Health and Safety Code §2000-2093.

³⁵ California Government Code §56824.10.

Type and Extent of Services

Services Provided

The services provided by the District include 1) detection of the presence and prevalence of vector-borne diseases such as plague, West Nile Virus, rabies and Lyme Disease through ongoing and comprehensive vector surveillance and testing, 2) reducing vectors or exposure to vectors that transmit diseases, 3) conducting routine inspections and treatment as necessary of known mosquito and rodent sources, 4) responding to public service requests for identification, advice and/or initiation of control measures for mosquitoes, rodents, wildlife, and miscellaneous invertebrates (e.g., ticks, yellow jackets, cockroaches, bees, fleas, flies, etc.), 5) providing public information through a variety of channels, including a website, social media and educational presentations for schools, homeowners associations, private businesses, civic groups and other interested groups regarding vectors and vector-borne diseases, and 6) preventing disease and illness by identifying, inventorying, inspecting, and treating sources of vector development.

Service Area

Vector control services are provided by SCCVCD throughout Santa Clara County, which includes 300 miles of streams, 5,000 acres of marshlands and 27,000 storm drain catch basins.

Service to Other Agencies

SCCVCD provides mosquito control services to the San Jose/Santa Clara Water Pollution Control Plant under contract.

Contracts for Services

The District does not receive any contract services from other public agencies. The District does make use of the State Department of Public Health laboratory, if for some reason the District's own lab is unable to process certain specimens. Although there is not contract for the lab, services are billed and performed under a broader statewide disease surveillance system.

Collaboration

SCCVCD is a division of the Santa Clara County Environmental Health Department. SCCVCD receives support services from the County, such as maintenance of the District's vehicles, financial management, and purchasing, which provides cost savings for the District. The District reimburses the County for services rendered with district funds. The District also participates in joint financing and purchasing efforts to minimize costs. SCCVCD's service yard was partially financed by the County, as it is shared with the Environmental Health Department.

In addition, the District has unwritten mutual aid agreements with respect to materials and supplies with other mosquito and vector control districts within the region. The District has joined a statewide coalition of abatement districts to share the cost of expensive chemical analysis for regulatory compliance, and collaborated with other Bay Area agencies to produce a Program Environmental Impact Report under the California Environmental Quality Act.

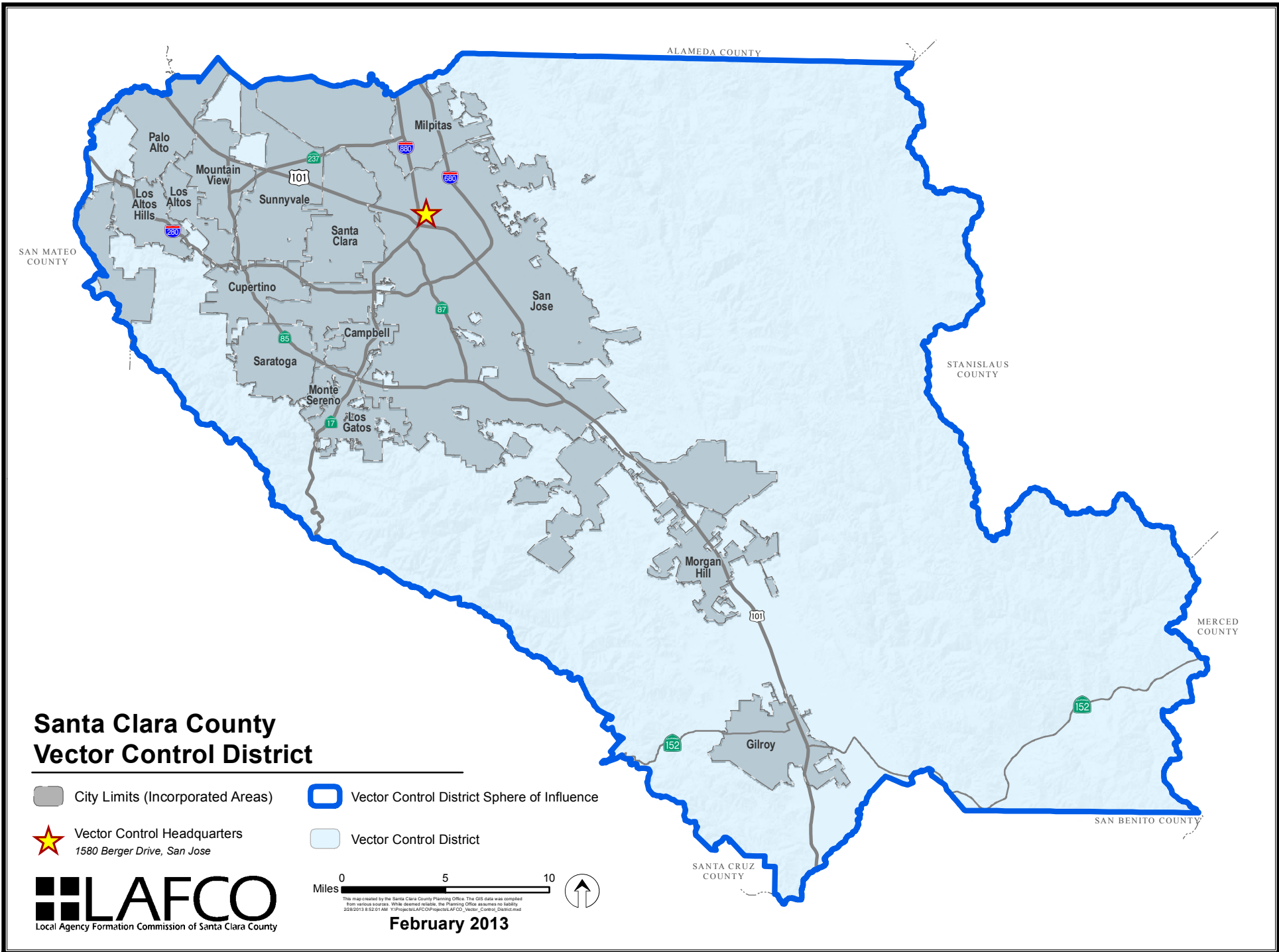
The District also interacts professionally at many levels. The Vector Biology Discussion Group meets monthly to discuss biological issues with eight other vector control districts in the Bay Area. District personnel attend meetings of the Mosquito and Vector Control Association of California, the American Mosquito Control Association, The Society for Vector Ecologists, and the Entomological Society of America.

The District uses data on threat assessment shared by Santa Clara County Department of Public Health.

SCCVDC maintains cooperative exchanges with the City of Palo Alto, City of Sunnyvale, and U.S. Fish and Wildlife Service in regards to salt marsh treatment, and with the City of Palo Alto for provision of storm drain treatment.

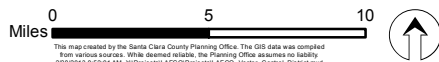
Overlapping and Neighboring Service Providers

There is no overlap in services provided by SCCVDC. There are, however, public agencies that provide services complimentary to the ones delivered by the District in Santa Clara County. Santa Clara County Division of Agriculture performs insect and non-medical pest identification. Individual cities in the County enforce sanitation laws which prevent vector spread. The County Department of Environmental Health addresses waste tire disposal, which is a significant mosquito breeding source. Santa Clara Valley Water District is in charge of access to and maintenance of natural streams within its jurisdiction, and design of wetlands and other structures. California Department of Fish and Game deals with wildlife problems and endangered species issues. California Department of Public Health provides laboratory support, collation of data, licensing of technicians, and West Nile Virus predictive risk analyses. The U.S. Army Corps of Engineers oversees project development related to waterways.



Santa Clara County Vector Control District

-  City Limits (Incorporated Areas)
-  Vector Control District Sphere of Influence
-  Vector Control Headquarters
1580 Berger Drive, San Jose
-  Vector Control District



This map created by the Santa Clara County Planning Office. The GIS data was compiled from various sources. While deemed reliable, the Planning Office assumes no liability.

February 2013

ACCOUNTABILITY AND GOVERNANCE

The District was formed as a dependent special district with the Santa Clara County Board of Supervisors as its governing body. The five county supervisors are elected to four-year terms of office with a three-term limit. Current board member names, positions, and term expiration dates are shown in Figure 3-2.

Figure 3-2: SCCVCD Governing Body

Santa Clara County Vector Control District					
<i>District Contact Information</i>					
Contact:	Russell Parman, Acting Vector Control Program Manager				
Address:	1580 Berger Drive, San Jose, CA 95131				
Telephone:	408-918-3497				
Email:	russell.parman@deh.sccgov.org				
Website:	http://www.sccgov.org/sites/vector/Pages/Vector-Control-District-Site-Home-Page.aspx or www.sccvector.org				
<i>Board of Supervisors</i>					
Member Name	Position	Began Serving	Term Expires	Manner of Selection	Length of Term
Mike Wasserman	District 1	2010	2014	Elected	4 years
Vacancy	District 2	N/A	N/A	N/A	N/A
Dave Cortese	District 3	2008	2016	Elected	4 years
Ken Yeager	District 4, President	2006	2014	Elected	4 years
Joe Simitian	District 5	2012	2016	Elected	4 years
<i>Meetings</i>					
Date:	Every other Tuesday at 9am.				
Location:	Santa Clara Board of Supervisors' Chambers, 70 West Hedding St. San Jose.				
Agenda Distribution:	Posted online and at the County Government Center.				
Minutes Distribution:	Posted online and at the County Government Center.				

The Board of Supervisors meets every other Tuesday morning at the Board of Supervisors' chambers in the County Government Center located at 70 West Hedding Street in San Jose. Each member of the Board of Supervisors receives \$143,000 annually in salary. Government Code §53235 requires that if a local government provides compensation or reimbursement of expenses to its board members, that local government must establish a written policy on reimbursements, and the board members must receive two hours of training in ethics at least once every two years. The County has adopted policies related to expense reimbursements, and the members of the Board of Supervisors have completed biennial ethics training as required.

Agendas and minutes for the meetings are posted on the bulletin board at the County Government Center, and are published online on the county website. The website also contains video archives of previous Board of Supervisors' meetings.

The District conducts constituent outreach through various methods. The county website has several pages dedicated to information regarding SCCVCD, including its mission, services provided, background information, online service requests, office location, media releases, and description of vectors, vector borne diseases and disease surveillance programs. Additionally, the District maintains two full-time positions for public relations, outreach and education. The Community Resources Specialist and Health Education Associate develop and deliver press releases, public brochures, respond to requests for interviews from all media, inform other government agencies, and give presentations.

The Board of Supervisors has adopted a policy manual that articulates the ethical standards and administrative policies for the Board. This policy manual was updated in July 2012 and is published on the county website.

Government Code §87203 requires persons who hold office to disclose their investments, their interests in real property and their incomes, and file these forms with the Fair Political Practices Commission each year. All of the current members of the Board of Supervisors have filed the Form 700 Statement of Economic Interest forms in 2012.

MANAGEMENT AND STAFFING

As shown in Figure 3-3, SCCVCD has a total of 32 full-time staff and seven part-year seasonal staff (3.5 FTEs). These staff are dedicated solely to the District's activities. If SCCVCD personnel contributes to County functions, then the District is reimbursed for this support. The District's general manager is responsible for the day-to-day operations of the District. The general manager of the District is accountable to the Director of Agriculture and Environmental Management who is accountable to the County Board of Supervisors. Many SCCVCD's personnel are certified by the State of California as Certified Technicians pursuant to the provisions of the California State Health and Safety Code.

Figure 3-3: Staffing Level by Division, FY 12-13

Division	FTE
Vector Control Program Manager	1
Vector Control Assistant Manager	1
Field Operations Supervisors	2
Field Operations Support Specialist	1
Account Clerk	1
Information Services Analyst	1
Disease Assessment & Lab Services	7
Public Outreach & Education	2
North County Operations Technicians	8
South County Operations Technicians	8
Seasonal Staff (seven total)	3.5
TOTAL	35.5

Source: Acting Vector Control District Manager

As a dependent special district of the County, some administrative services are provided by county departments, including information systems, legislative files for board motions, legal counsel, and accounting. The County is reimbursed based on a generalized rate for overhead services (i.e., clerk time) that are financed through the County's general fund. For services such as legal counsel, the District is billed an hourly rate by County Counsel. A certified public accountant firm and private engineering firm are contracted with directly by the District, when necessary.

SCCVCD has adopted a mission statement and goals. The District's mission statement is to detect and minimize vector-borne diseases, to abate mosquitoes, and to assist the public in resolving problems with rodents, wildlife, and insects of medical significance. The District uses numerical objectives and performance measures to assess its operations. SCCVCD has recently developed a strategic plan for 2013-2015 and a *Mosquito-borne Virus Response and Operations Plan* which provides procedures and strategies for surveillance and operational response to mosquito-borne viruses, such as West Nile virus, St. Louis encephalitis and western equine encephalomyelitis. SCCVCD submits reports to the County Agricultural Commissioner, County Department of Environmental Health and the County Board of Supervisors.

Other documents that the District uses to guide efforts and services include the County's annually adopted budget, as SCCVCD is included as part of the County's compiled budget. The County has adopted a budget for FY 12-13, which is available online.

Government Code §53901 states that within 60 days after the beginning of the fiscal year each local agency must submit its budget to the county auditor. These budgets are to be filed and made available on request by the public at the county auditor's office. While, the County has reported that in recent years, it has not been the practice for special districts to file their budgets with the County, SCCVCD's budget is part of the County's budget and is readily available online.

Special districts must submit a report to the State Controller of all financial transactions of the district during the preceding fiscal year within 90 days after the close of each fiscal year, in the form required by the State Controller, pursuant to Government Code §53891. If filed in electronic format, the report must be submitted within 110 days after the close of the fiscal year. The District has complied with this requirement.

All special districts are required to submit annual audits to the County within 12 months of the completion of the fiscal year, unless the Board of Supervisors has approved a biennial or five-year schedule.³⁶ Although SCCVCD conducts its own annual audits of its financial statements, the District does not have to submit them to the County; the District's finances are also included in the County's Comprehensive Annual Financial Reports (CAFR) which are audited annually. The District's most recent audit was completed for FY 12.

³⁶ Government Code §26909.

POPULATION AND PROJECTED GROWTH

Land Uses

The District encompasses the entire County. The County of Santa Clara contains a wide range of land uses, from all types of urban uses to large areas of hillside, open space, and agricultural uses. Numerous unincorporated pocket areas exist that are developed with urban uses. Development within the cities ranges from fully developed urban areas to expansive hillside, open space, and agricultural lands.

Current Population

As of 2010, the District had approximately 1,781,642 residents, based on 2010 Census data.

Disadvantaged Unincorporated Communities

LAFCO is required to evaluate disadvantaged unincorporated communities as part of this service review, including the location and characteristics of any such communities. A disadvantaged unincorporated community is defined as any area with 12 or more registered voters, or as determined by commission policy, where the median household income is less than 80 percent of the statewide annual median.³⁷

The California Department of Water Resources (DWR) has developed a mapping tool to assist in determining which communities meet the disadvantaged communities median household income definition. DWR is not bound by the same law as LAFCO to define communities with a minimum threshold of 12 or more registered voters. However, the DWR data can be used for the purposes of this report as an indicator of any larger communities that may meet the income definition of disadvantaged. Based on mapping information from DWR, there are no disadvantaged unincorporated communities within or adjacent to SCCVCD.³⁸

Projected Growth

Moderate population growth is anticipated within the District's bounds based on the Association of Bay Area Government's (ABAG) projections for Santa Clara County. ABAG projects that the County will experience 36 percent growth over the 25-year period from

³⁷ Government Code §56033.5.

³⁸ DWR maps and GIS files are derived from the US Census Bureau's American Community Survey (ACS) and are compiled for the five-year period 2006-2010.

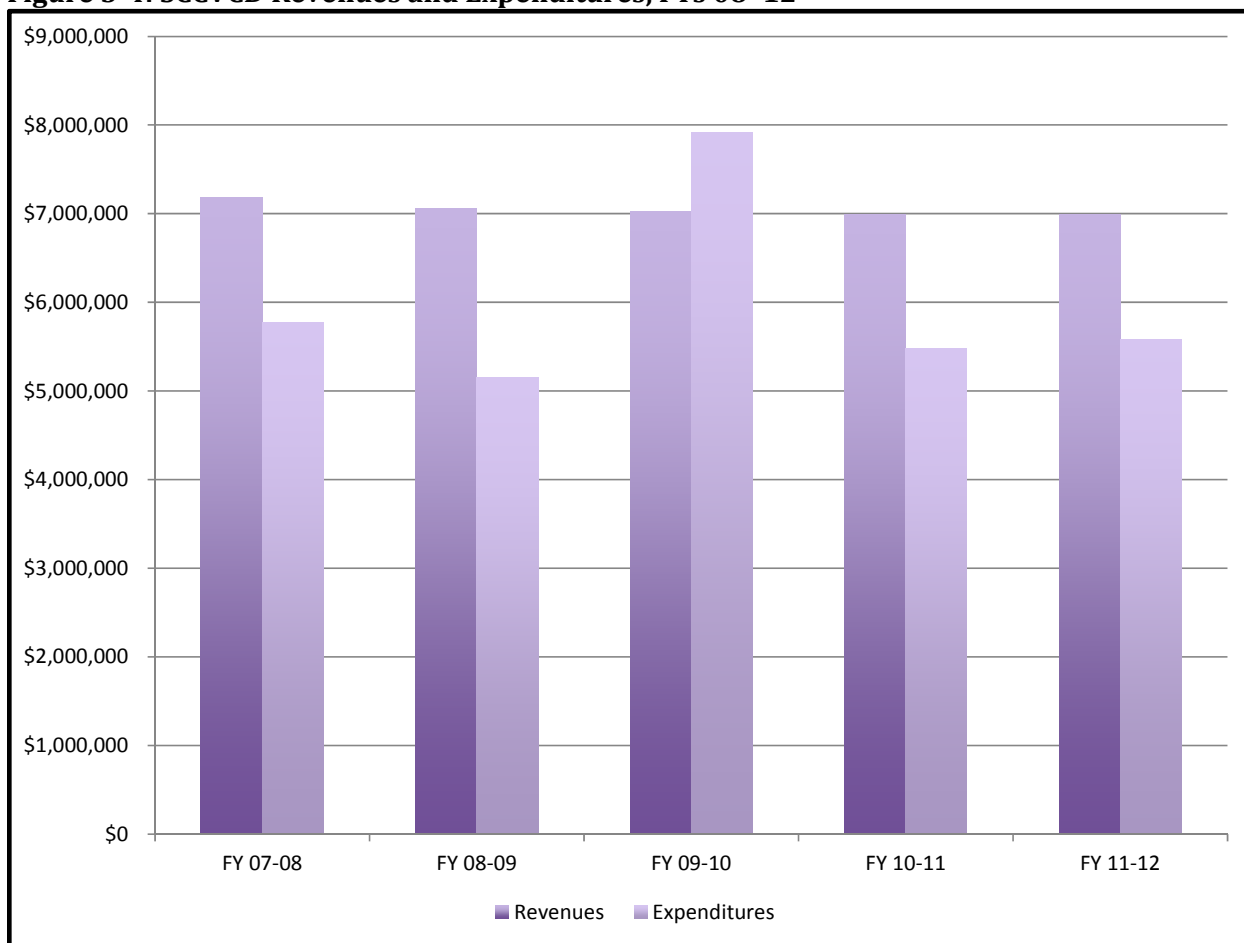
2010 to 2035, which is equivalent to 1.5 percent average annual growth.³⁹ By 2035, the population of SCCVCD is expected to reach 2,431,400.

FINANCING

Financial Adequacy

The District reported that the current level of financing was adequate to provide services. District revenues have exceeded expenditures in FYs 08, 09, 11, and 12, as shown in Figure 3-4. In FY 10, expenditures were higher than revenues by \$889,045, due to capital improvements in the amount of \$2.7 million performed by SCCVCD. The funds were spent on alterations to the new vector control building.

Figure 3-4: SCCVCD Revenues and Expenditures, FYs 08-12



Source: Annual Audited Statements for FYs 2008 through FY 2012

³⁹ ABAG, Projections 2009, 2009.

Revenue Sources

In FY 12, the District received \$6,995,269 in revenue as depicted in Figure 3-5. The primary source of revenue for the District was benefit assessment income (98 percent). The a majority of the remaining revenue came from interest income and miscellaneous revenue, which is received for providing mosquito control services at the San Jose/Santa Clara Water Pollution Control Plant.

Figure 3-5: Revenue Sources, FY 12

Revenue Category	Revenue	% of Total Revenue
Benefit Assessment Income	\$6,889,156	98%
Interest Income	\$68,970	1.5%
Intergovernmental	\$1,509	0%
Miscellaneous	\$35,634	.5%
Total	\$6,995,269	100%

Source: Vector Control FY 2012 Audit Report

Rates

SCCVCD has levies two benefit assessments on properties within the District. The first assessment began in 1996. The District annually collects approximately \$2.6 million from this particular assessment. The assessment is a flat rate dependent on land use, and is not adjusted annually. There is no sunset date for the assessment. A single family residence is considered one benefit unit and is levied \$2.41 annually. Other land uses are considered greater benefit units and are assessed at \$2.41 per unit. The maximum assessment is \$14.45 for a regional shopping center.

In 2005, SCCVCD's voters passed an assessment ballot proceeding establishing another benefit assessment to fund the District's cost of providing vector control services, maintenance and capital improvement expenses. The assessment may be inflated up to three percent annually depending on the Consumer Price Index. The assessment is to be continued in perpetuity, so long as mosquitoes and vectors remains in existence in the County and the District requires funding from the assessment for its services. In order to continue the assessment, the Board must approve an annually updated engineer's report, a budget specific to the assessment revenues, and a list of services to be provided via the assessment revenue, as well as conduct an public hearing regarding the assessment.

The assessment is based on benefit zones, which have been identified based on the proportion of benefit to the real property from services offered by the District. Areas east of the westernmost ridgeline of the Diablo Range are more remotely located and receive a reduced level of services and corresponding benefits relative to other parcels in SCCVCD.⁴⁰ These areas are referred to as Zone B. All other parcels within the County boundaries are

⁴⁰ SCCVCD, Mosquito, Vector, and Disease Control Assessment Engineer's Report, April 2009, p. 41.

within Zone A. Using district estimates for the amount of services provided to parcels in Zone B, it was found that parcels in Zone B receive approximately half of the average level of services and benefits provided to Zone A. Therefore, residents in Zone B pay 50 percent of the assessment rate per benefit unit. Figure 3-6 shows the allocation of assessments for FY 13.

Figure 3-6: Benefit Assessment by Zone, FY 13

Zone of Benefit	Total SFE* Units	Assessment per SFE*	Total Assessment
Zone A	498,926.27	\$8.36	\$4,171,024
Zone B	1,928.57	\$4.18	\$8,061
		\$12.54	\$4,179,085

*SFE = Single Family Equivalent

Source: Vector Control District Engineer’s Report FY 2013

Expenditures

In FY 12, the District spent a total of \$5.6 million as depicted in Figure 3-7. A majority of expenditures are attributable to salaries and benefits (65 percent) and service and supplies (31 percent).

Figure 3-7: SCCVCD Expenditures FY 2012

Expenditure Category	Expenditures	% of Total Expenditures
Salaries and Benefits	\$3,592,361	65%
Services and Supplies	\$1,744,504	31%
Capital Outlay	\$(105,663)	-2%
Principal Debt Service	\$170,000	3%
Interest Debt Service	\$179,156	3%
Fees Debt Service	\$1,800	0%
Total	\$5,582,158	100%

Source: Vector Control FY 2012 Audit Report

Capital Outlays

In 2012, the County adopted an annual update of its five-year capital improvement plan (CIP). It includes one capital project for SCCVCD—alterations to the new vector control building—which has already been completed. The amount available for alterations was \$2,793,617. In FY 10, the District spent \$2,680,454 on the project. After the project’s completion, the amount remaining was \$113.163.

Reserves

Although, the District has not adopted a formal written policy regarding financial reserves, SCCVCD has a management practice to keep a reserve balance. The reserve, which is reviewed annually during the budget process, is designed to cover operating fund, retirement payoff, health insurance, PERS, building maintenance, legal liability, debt service, and early loan payoff as needed. At the end of FY 12, the District had a significant

financial reserve of \$11,883,193, which was equivalent to 212 percent of the District’s FY 12 expenditures. Currently, a significant portion of reserves are being set aside annually for early building loan payoff which will save the District a considerable amount of interest costs over the long run.

Debt

As shown in Figure 3-8, the District’s long-term debt is represented by certificates of participation for \$4,495,000 issued by SCCVCD in November 2006 through the California Special Districts Association (CSDA) Finance Corporation to finance the acquisition of an office building. At the end of FY 12, the debt balance was \$3.6 million. The debt matures in 2027.

Figure 3-8: SCCVCD Long-Term Debt

Debt Instrument	Certificates of Participation, 2006 Series
Purpose:	Finance the acquisition of an office building
Date of Issue	November 15, 2006
Outstanding Amount FY 12	\$3,630,000
How Financed	Special Districts Association Finance Corporation
Maturity Date:	June 1, 2027

INFRASTRUCTURE AND FACILITIES

The District owns and operates an office building and property purchased in 2006. The property is located at 1580 Berger Drive in San Jose. SCCVCD occupied the building in 2010 after tenant improvements, which included addition of a laboratory, in the amount of \$3.7 million were completed. The property containing the District’s office building is 1.81 acres in size with approximately 20,000 square feet of office space. The District has not made any capital improvements since 2010.

SCCVCD also occupies about 300 square feet of office space in the South County Environmental Health Department facility situated on Highland Avenue in San Martin.

The Vector Control District also owns a service yard located at 1551 Berger Drive. The property is 0.7 acres with 7,596 square feet of equipment storage.

The District’s vehicle fleet consists of 38 vehicles.

Infrastructure Needs

The District’s office building and the service yard appear to be well maintained. No critical deferred maintenance issues were identified. Given that significant capital improvements were made to the office building in 2010, the building appears to be in good working condition. SCCVCD’s fleet has an effective replacement program and does not exceed reasonable replacement guidelines.

Shared Facilities

In addition to its own office building, SCCVCD recently began sharing office space with other county agencies in the South County Environmental Health Department. In addition, the District shares its warehouse space with the Environmental Health Department.

DEMAND FOR SERVICES

The District's field workers target between 500 and 600 inventoried mosquito breeding sources in the County. In addition, the District has inventoried over 4,000 neglected pools since 2007, and routinely treats tens of thousands of catchbasins annually. Staff members visit high-risk sources (those breeding West Nile virus vectors) once a week and other sources once or twice a month.

Property owners and residents can electronically request or call the District for a free home and yard consultation for rodent, wildlife and mosquito problems. Service technicians usually respond within two to three business days of receiving a request for service.

As shown in Figure 3-9, while the number of vector control requests received from the public has decreased over the past five years, the number of mosquito source inspections has increased. Over the course of the last few years, the number of mosquito source control applications fluctuated peaking in FY 10.

Figure 3-9: SCCVCD Service Demand, FYs 07-12

Type of Workload	FY 2007	FY 2008	FY 2009	FY 2010	FY 2011	FY 2012
Vector Control Services (# of Requests)	7,290	5,722	4,710	4,498	4,984	4,585
Mosquito Source Inspections (# of Inspections)	5,889	5,271	3,868	6,400	7,069	8,054
Mosquito Source Control (# of Applications)	1,608	1,321	1,984	2,157	1,714	1,677

Source: Santa Clara County CAFR FY 12

GOVERNANCE STRUCTURE OPTIONS

No government structure options were identified for Santa Clara County Vector Control District.

SANTA CLARA COUNTY VECTOR CONTROL DISTRICT SERVICE REVIEW DETERMINATIONS

Growth and Population Projections

- ❖ As of 2010, Santa Clara County Vector Control District (SCCVCD) had approximately 1,781,642 residents, based on 2010 Census data.
- ❖ Association of Bay Area Governments (ABAG) projects that the area will experience 1.5 percent average annual growth through 2035. By 2035, the population of SCCVCD is expected to reach 2,431,400.

Location and Characteristics of any Disadvantaged Unincorporated Communities Within or Contiguous to the Sphere of Influence

- ❖ There are no disadvantaged unincorporated communities within or adjacent to the SCCVCD's service area, based on mapping information provided by the State of California Department of Water Resources.

Present and Planned Capacity of Public Facilities and Adequacy of Public Services, Including Infrastructure Needs and Deficiencies

- ❖ The District's facilities have sufficient capacity, based on the absence of current infrastructure needs, lack of deferred maintenance at its buildings and warehouse, and SCCVCD's fleet being within reasonable replacement guidelines.
- ❖ SCCVCD plans for its capital improvements through the five-year Capital Improvement Plan (CIP) adopted by the County. The current CIP included one project for the District, in the form of enhancements to its new vector control building, which has already been completed.
- ❖ SCCVCD has established an adequate level of vector control services to limit the nuisance effects of mosquitoes, yellow jackets, rodents, and ticks consistent with constituent preferences and local, state and federal requirements. There are no present or recent public health advisories concerning mosquito or vector-borne illnesses in the areas served by SCCVCD.
- ❖ The District reports that all environmental and safety standards, as required by local, state, and federal programs, are strictly enforced, and there are no deficiencies related to services provided.

- ❖ Based on the response time of typically within two to three business days that SCCVCD is able to maintain, with an estimated average of 13 requests per day, it appears that the District has sufficient capacity to continue to serve existing and anticipated demand.
- ❖ SCCVCD's staff are appropriately certified by the State of California as Certified Technicians pursuant to the provisions of the California State Health and Safety Code.

Financial Ability of Agency to Provide Services

- ❖ SCCVCD reported that its financing levels were adequate to deliver services. No challenges to financing were identified.
- ❖ District revenues have exceeded expenditures in FYs 08, 09, 11, and 12. In FY 10, expenditures were higher than revenues, due to capital improvements performed by SCCVCD.
- ❖ Ninety eight percent of the District's revenues are derived from two benefit assessments.
- ❖ SCCVCD has a management practice to maintain a reserve balance. At the end of FY 12, the District had a significant financial reserve of 212 percent of the District's FY 12 expenditures. Currently, a significant portion of reserves are being set aside annually for early building loan payoff.
- ❖ The District's long-term debt is represented by certificates of participation for \$4,495,000, which was used to purchase the new office building. The debt matures in 2027.

Status and Opportunities for Shared Facilities

- ❖ SCCVCD is a dependent district and a division of the County's Environmental Health Department.
- ❖ The District receives support services from the County, such as maintenance of the District's vehicles, financial management, and purchasing.
- ❖ SCCVCD shares office space in the County Environmental Health Department facility with other county agencies.
- ❖ The District participates in joint financing and purchasing efforts to minimize costs. The District's warehouse was partially financed by the County, as it is shared with the Environmental Health Department

- ❖ SCCVCD has an unwritten mutual-aid agreement with respect to materials and supplies with other mosquito and vector-control districts within the region.
- ❖ The District has joined a statewide coalition of abatement districts to share the cost of expensive chemical analysis for regulatory compliance, and collaborated with other service providers to produce a Program Environmental Impact Report under the California Environmental Quality Act.
- ❖ District personnel attend meetings of the Vector Biology Discussion group, the Mosquito and Vector Control Association of California, the American Mosquito Control Association, and the Entomological Society of America.
- ❖ The District uses data on threat assessment shared by Santa Clara County Department of Public Health.

Accountability for Community Services, Including Governmental Structure and Operational Efficiencies

- ❖ SCCVCD demonstrated accountability and transparency in its various aspects of operations. The governing body updates constituents, broadcasts its meetings, solicits constituent input, discloses its finances, and posts public documents on its website. The District's website appropriately provides information on SCCVCD services, District's activity updates, vector-related facts, and contact information to submit service requests. SCCVCD keeps its financial reporting and budgets up-to-date and readily available to the public. The District fully cooperated with LAFCO requests for information.
- ❖ The Board of Supervisors has adopted a policy manual that articulates the ethical standards and administrative policies for the Board. All four current members of the Board of Supervisors have filed the Statement of Economic Interest forms in 2012 and completed biennial ethics training. The County has adopted an ordinance on expense reimbursements for the Board of Supervisors.
- ❖ No government structure options were identified for SCCVCD.

SANTA CLARA COUNTY VECTOR CONTROL DISTRICT SPHERE OF INFLUENCE UPDATE

Existing Sphere of Influence Boundary

The District's current SOI is countywide and coterminous with SCCVCD's boundaries.

Recommended Sphere of Influence Boundary

As the existing SOI for the District is coterminous with the County's boundaries, no further outward expansion is possible. Reduction in the sphere of influence is also not recommended, as the District is the primary provider for vector abatement services throughout the County. Services provided by SCCVCD are not duplicated; other public agencies provide services complimentary to the ones delivered by the District. As there are no areas within the District's boundaries and SOI where the District's services are not provided, it is recommended for the Commission to retain the SCCVCD's coterminous SOI.

Proposed Sphere of Influence Determinations

The nature, location, extent, functions, and classes of services provided

- ❖ The services provided by the District throughout Santa Clara County include 1) detection of the presence and prevalence of vector-borne diseases through surveillance and testing, 2) reduction of vectors or exposure to vectors that transmit diseases, 3) conducting routine inspections and treatment of known mosquito and rodent sources, 4) responding to public service requests, 5) providing educational information on vectors and vector-borne diseases, and 6) preventing disease and illness by identifying, inventorying, inspecting, and treating sources of vector development.

Present and planned land uses in the area, including agricultural and open-space lands

- ❖ The countywide District contains a wide range of land uses, including all types of urban uses to large areas of hillside, open space, and agricultural uses. While the unincorporated areas are generally not developed, there are numerous unincorporated pocket areas are developed with urban uses. Development within the cities ranges from fully developed urban areas to expansive hillside, open space, and agricultural lands.
- ❖ While there are agricultural and open-space lands within SCCVCD, no impacts on agricultural resources, open space or Williamson Act contracts will occur as no service changes are proposed.

Present and probable need for public facilities and services in the area

- ❖ Given that in FY 12, SCCVCD frequently visited mosquito sources, responded to about 4,585 service requests, performed 8,054 mosquito source inspections, and completed 1,677 mosquito source control applications, there is a present need for the District's services.
- ❖ The County is expected to experience a moderate growth rate of 1.5 percent annually through 2035. As demand for vector control services is driven by growth of both human and vector populations, as well as the creation of water and vegetative conditions that are conducive to vector breeding, the need for vector-control services may grow in the future.

Present capacity of public facilities and adequacy of public services that the agency provides or is authorized to provide

- ❖ Based on the service request response time of typically within two to three business days that SCCVCD is able to maintain with an estimated average of 13 requests per day, it appears that the District has sufficient capacity to continue to serve existing and anticipated demand.
- ❖ There are no present or recent public health advisories concerning mosquito or vector-borne illnesses in the areas served by SCCVCD. The District has been successful in reducing the outbreak of illnesses, including plague and encephalitis.
- ❖ The District's facilities have sufficient capacity, based on the absence of current infrastructure needs, lack of deferred maintenance at its buildings and service yard, and SCCVCD's fleet being within reasonable replacement guidelines.

Existence of any social or economic communities of interest in the area if the Commission determines that they are relevant to the agency

- ❖ SCCVCD was formed to provide countywide vector control services and serve the residents of Santa Clara County. All County residents benefit from services provided by SCCVCD. Residents in Zone A who pay higher benefit assessment and receive higher level of service than residents in Zone B, have a stronger economic interest in the activities of the District.