

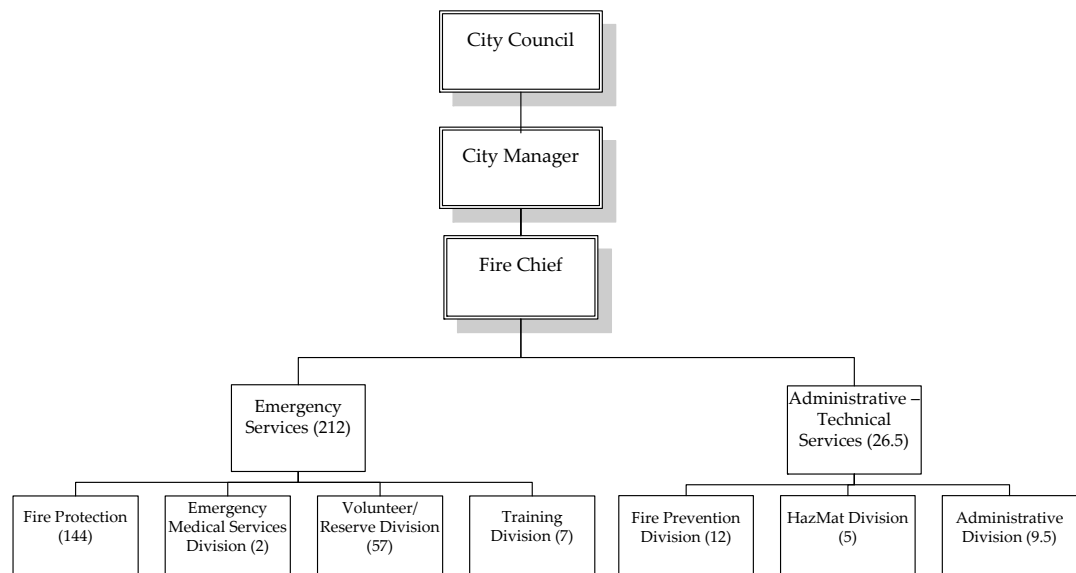
4.7 City of Santa Clara Fire Department

4.7.1 Overview

The Santa Clara City Fire Department provides fire protection and emergency medical services to a population of 114,700 within the 19.3 square miles of the city limits of Santa Clara. Figure 43 is a map depicting the boundaries and fire station locations of the City of Santa Clara. Santa Clara is a charter city operating under the council-manager form of local government. The governing body is a seven member City Council comprised of six council members elected at-large for four-year terms and an at-large mayor serving a four-year term. The Fire Chief is the director of the department and reports to the City Manager.

The City of Santa Clara Fire Department's organization chart is shown in Figure 38 below.

Figure 38: City of Santa Clara Fire Department Organization Chart



4.7.2 Budget

The Fire Department is funded primarily from the City's General Fund. Tables 48 and 49 display budgeted expenditures by function and type respectively, as reported in the FY 2010-11 budget.⁶

⁶ Not all departments report expenditures by function. Where such a distribution was not included in budget documents, Management Partners asked departments to sort expenditures into functions to provide a basis for comparing department expenditures on emergency response activities.

Table 48: Expenditures by Function

Function	Expenditure
Administrative and Management	\$1,756,790
Operations	\$26,791,827
Fire Prevention	\$1,941,580
Other	\$3,232,527
Total Expenditures	\$33,722,724

Table 49: Expenditures by Type

Type	Expenditure
Salaries and Benefits	\$23,739,873
Operations and Maintenance	\$9,982,851
Capital	\$0
Total Expenditures	\$33,722,724

4.7.3 Stations

Service is provided from ten stations. All stations were replaced or remodeled within the past ten years and are in good condition. There are no plans to close any stations or reduce daily staffing.

4.7.4 Staffing

Staffing consists of eight three-person engine companies, one three-person truck company, one four person truck company, a rescue unit and a Hazmat unit. The department also staffs three ambulances provided by AMR with two-person crews. The ambulances are used to transport patients when authorized by the County EMS protocols. Initial deployment to a single alarm structure fire is 21.

Table 50 below shows the number of sworn and non-sworn personnel, as reported in the FY 2010-11 budget.

Table 50: Staffing

	Sworn	Non-Sworn	Total
Administrative and Management	14.00	9.50	23.50
Operations	148.00	0.00	148.00
Fire Prevention	6.00	2.00	8.00
Other	0.00	0.00	0.00
Total FTEs	168.00	11.50	179.50

4.7.5 Labor Agreements

Labor agreement information is displayed in Table 51.

Table 51: Labor Agreements

Labor Agreements	Term	Expires
IAFF Local 1165	2 years	November 14, 2010

4.7.6 Benefits

Pension and health benefits for sworn personnel are shown in Table 52 below.

Table 52: Benefits

Benefits	
Pension	CalPERS 3% @ 50. Employees pay 9%
Health	Department pays 100% of Kaiser plan

4.7.7 Apparatus

Table 53 displays the department's apparatus. The target service period for all apparatus is 20 years, including 15 years on the line and five years in reserve. All line apparatus are within the replacement policy. Apparatus maintenance is provided by the City's Public Works Department. Apparatus purchase is funded through an internal service fund with an annual schedule of contributions.

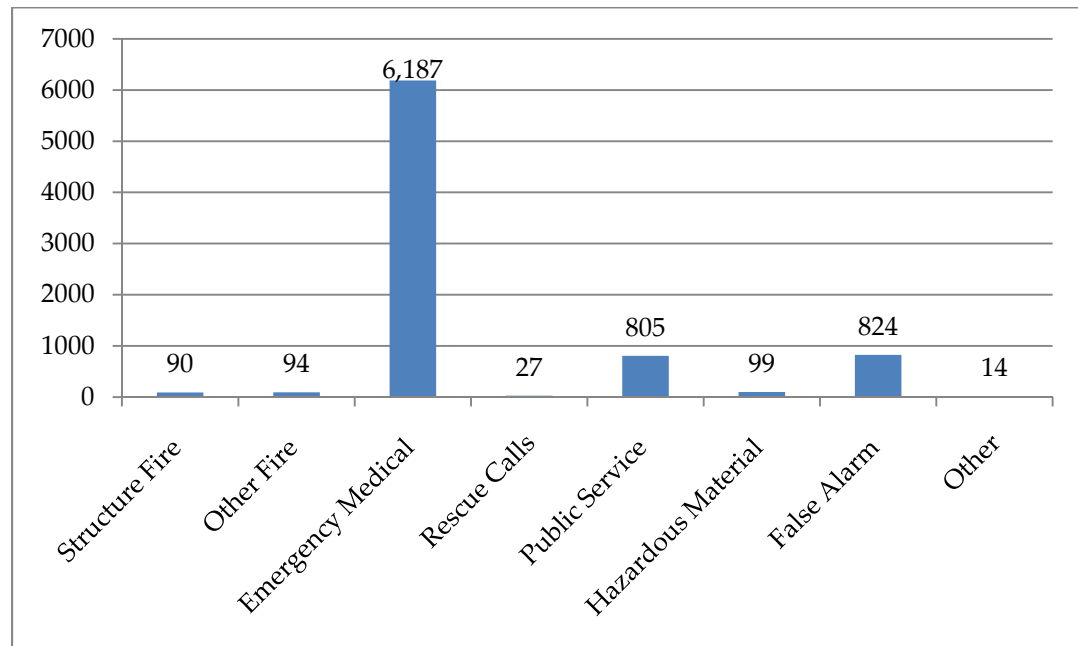
Table 53: Apparatus

Station	Apparatus	Assigned Number	Year
1	Engine	E-1	1999
1	Medic Ambulance	M-1	1995
2	Truck Aerial/Quint	T-2	2009
2	Rescue	Air	2005
2	Utility Tow Vehicle		2003
2	Truck Aerial/Quint	RT-1	1993
3	Engine	E-3	1999
3	Engine	RE-2	1985
4	Engine	E-4	1996
5	Engine	E-5	1999
5	Medic Ambulance	M-5	2002
6	Engine	E-6	1996
6	Medic Ambulance	M-6	1995
7	Engine	E-7	1996
7	Engine	RE-1	1990
8	Truck Aerial/Quint	T-8	2009
8	Truck Aerial/Quint	RT-2	1988
9	Engine	E-9	1999
9	Hazmat	Air	1997
9	Medic Ambulance	RM-1	1995
9	Rescue	Air	1991
9	Utility Tow Vehicle		1992
10	Engine	E-10	1996
10	Engine	RE3	1985
10	Engine	RE3	1985

4.7.8 Service Delivery

Dispatch is provided by the Santa Clara City Police Department, with information from medical/EMD calls transferred to the Santa Clara County Communications Center to initiate an ambulance response. In 2009, 8,140 calls for service were reported; 76% of them were for emergency medical services. All calls for service are displayed in Figure 39 according to type of call.

Figure 39: Calls for Service in 2009



The department is a party to the Santa Clara County Master Mutual Aid agreement. Automatic aid agreements are in effect with the San José City Fire Department and CCFD. Table 54 lists the mutual and automatic aid that was given and received in 2009.

Table 54: Mutual and Automatic Aid in 2009

Agency	Mutual Aid Received	Automatic Aid Received	Mutual Aid Given	Automatic Aid Given
Milpitas	0	0	1	0
San José	0	0	3	6
Sunnyvale	1	0	1	0
Total	2	0	6	6

Table 55 shows response standards and performance in 2009.

Table 55: Response Standards and Performance for 2009

Measure	Standard*	Actual Performance
Emergency calls – non-medical	3 minute average response time	4 minutes, 32 seconds average response time
Emergency calls - medical	90%	95.89%

*Response standards for non-medical emergency calls are established by the department. The County EMS agency has established the 90% compliance standard for medical emergency calls; this standard applies to each category, i.e., urban, suburban, etc.

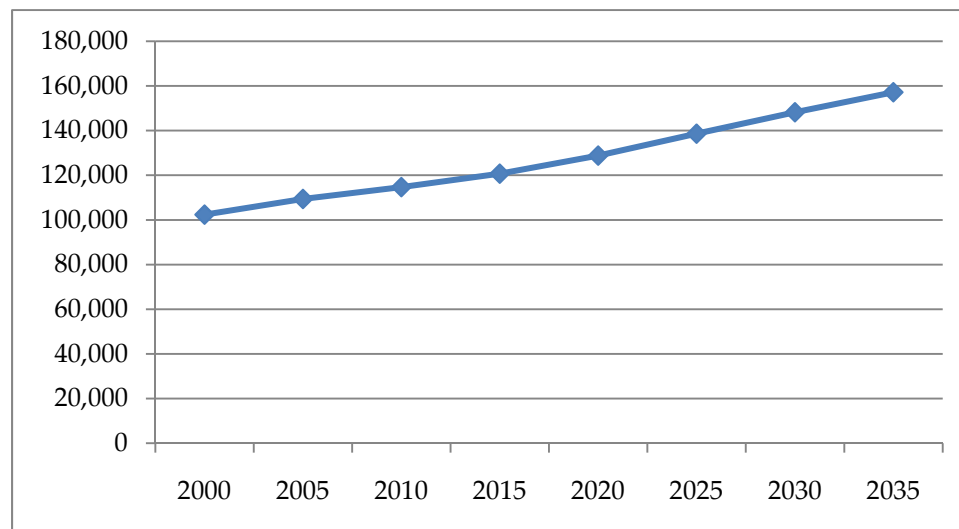
The City has an ISO rating of 2.

The department maintains a Fire Prevention Bureau managed by a battalion chief/fire marshal. Staffing consists of five deputy fire marshals at the captain rank and two technicians. The bureau conducts plan check and inspection services for new construction and annual maintenance inspections. Every business is inspected annually and fire companies conduct certain inspections. The department maintains a training facility that is staffed with one battalion chief and three assistant training officers at the captain level. Three additional personnel are on a 40-hour schedule.

4.7.9 Trends and Projections

The City's population is projected to increase by 37% over the next 25 years to approximately 157,200; an annualized rate of 1.5%. Figure 40 shows the projected population growth between 2000 and 2035.

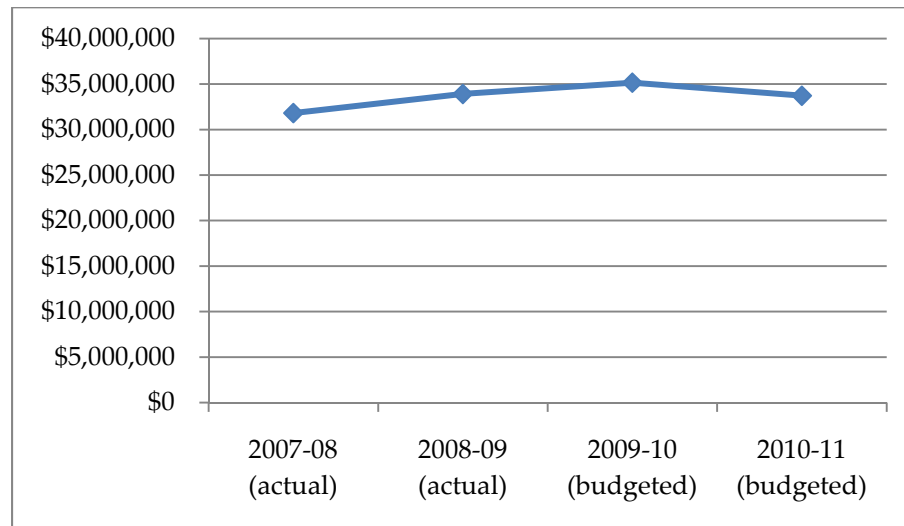
Figure 40: Projected Population City of Santa Clara 2000 to 2035



Source: Association of Bay Area Governments

Fire department expenditures peaked in FY 2008-09, and have decreased by approximately 4% to FY 2010-11. Figure 41 shows department expenditures during the past four fiscal years.

Figure 41: Expenditures and Budget 2007-08 to 2010-11



As Figure 42 shows, staffing has remained constant at 179.50 FTE.

Figure 42: Staffing

