

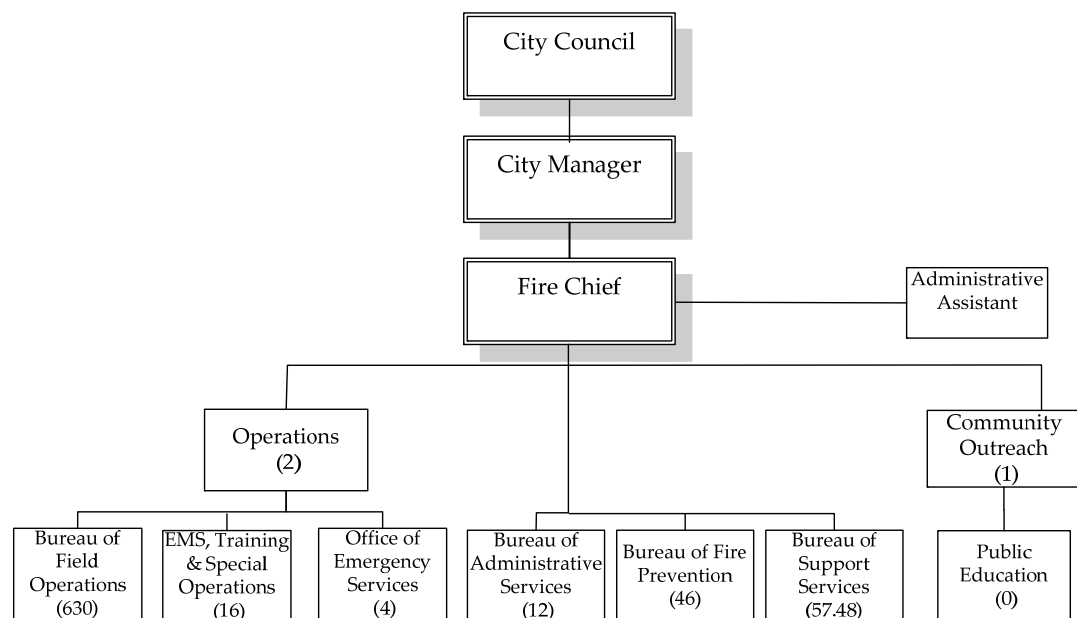
## 4.6 City of San José Fire Department

### 4.6.1 Overview

The San José Fire Department provides fire protection and emergency medical service to a 205 square mile area with a population of about 981,000. In addition to the City of San José, the department services unincorporated islands and adjacent areas through a contract with the CCFD; these areas have a population of approximately 56,567. Figure 37 is a map depicting the boundaries and fire station locations of the City of San Jose. San José is a charter city with an 11-member City Council. The city is a council-manager form of government with the Fire Chief reporting to the City Manager.

The department organization chart is shown in Figure 32.

Figure 32: San José Fire Department Organization Chart



### 4.6.2 Budget

The department is funded primarily from the City's General Fund. Tables 40 and 41 display budgeted expenditures by function and type respectively, as reported in the FY 2010-11 budget.<sup>5</sup>

<sup>5</sup> Not all departments report expenditures by function. Where such a distribution was not included in budget documents, Management Partners asked departments to sort expenditures into functions to provide a basis for comparing department expenditures on emergency response activities.

Table 40: Expenditures by Function

Function	Expenditure
Administrative and Management	\$14,468,090
Operations	\$126,926,383
Fire Prevention	\$6,665,904
Other	\$5,271,903
<b>Total Expenditures</b>	<b>\$153,332,280</b>

Table 41: Expenditures by Type

Type	Expenditure
Salaries and Benefits	\$146,426,316
Operations and Maintenance	\$6,905,964
Subtotal Operations	\$153,332,280
Capital	\$0
<b>Total Expenditures</b>	<b>\$153,332,280</b>

#### 4.6.3 Stations

The City has 34 fire stations. Thirteen were identified as in excellent condition; 14 were identified as in fair condition; and seven were identified as in poor condition. Information on each station is provided in Attachment C.

#### 4.6.4 Staffing

According to the FY 2010-11 Adopted Budget, the department has 770.48 FTEs, of which 665 are sworn positions (as shown in Table 42). Engines companies are staffed with four personnel and truck companies with five ; there is at least one medic on each apparatus. At some stations companies are split and assigned to two pieces of apparatus. Initial deployment to a single alarm structure fire is 14 to 24, depending upon conditions described in the 911 call.

Table 42: Staffing

	Sworn	Non-Sworn	Total
<b>Administrative and Management</b>	18.00	27.00	45.00
<b>Operations</b>	630.00	49.48	679.48
<b>Fire Prevention</b>	17.00	29.00	46.00
<b>Other</b>	0.00	0.00	0.00
<b>Total FTEs</b>	<b>665.00</b>	<b>105.48</b>	<b>770.48</b>

#### 4.6.5 Labor Agreements

Labor agreement information is displayed in Table 43. The department's labor agreement with IAFF has expired. There is currently no new agreement in place.

Table 43: Labor Agreements

Labor Agreements	Term	Expires
<b>IAFF Local 230</b>	5 years	June 30, 2009

#### 4.6.6 Benefits

Pension and health benefits for sworn personnel are shown in Table 44 below.

Table 44: Benefits

Benefits	
<b>Pension</b>	SJ Police and Fire Retirement Plan System. 2.5% @ 50 up to 20 years. 3% @ 50 after 20 years, maximum of 90%
<b>Health</b>	City pays 90% of lowest cost plan

#### 4.6.7 Apparatus

The department staffs 30 engines, 9 trucks, 5 medic units, 4 light units, 2 brush patrols, 1 Urban Search and Rescue unit and 1 HazMat unit on a daily basis. This staffing is augmented by additional brush patrols in the fire season. Engines are evaluated for replacement at 17 years; trucks at 20 years. Apparatus are replaced with funds from a 2002 bond issue. All front line apparatus currently in use are consistent with the replacement cycle. Apparatus maintenance is performed by the City's Fleet Management Division of the General Services Department. Table 45 displays the department's apparatus. Attachment C provides more detail about apparatus.

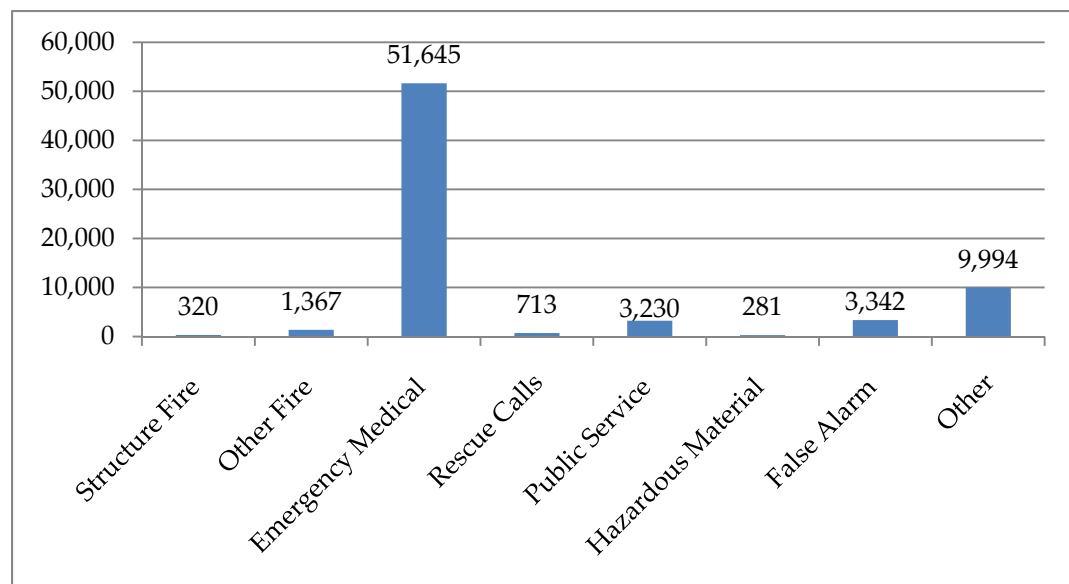
Table 45: Apparatus

Apparatus	Quantity
Engine	30
Truck	9
Hazardous Incident Team (HIT)	1
Rescue (USAR)	1
Medic Units	5
Light Units	4
Brush Patrols	2

#### 4.6.8 Service Delivery

Dispatch is provided by the department's communications unit in the City's Communication Center. The Fire Department responded to 70,892 calls in calendar year 2009; about 73% were EMS calls. Figure 33 shows calls for service by type.

Figure 33: Calls for Service in 2009



The department has a mutual/auto aid agreement with the CCFD. Mutual and automatic aid reported for 2009 is shown below in Table 46.

Table 46: Mutual and Automatic Aid in 2009

Agency	Mutual Aid Received	Automatic Aid Received	Mutual Aid Given	Automatic Aid Given
CCFD	1	1	7	44
SCFD	0	0	6	1
City of Santa Clara	1	0	2	0
City of Milpitas	0	0	1	0
<b>Total</b>	<b>2</b>	<b>1</b>	<b>16</b>	<b>45</b>

*Reported aid activity is significantly less than actual activity. The San Jose Fire Department acknowledges record keeping problems on auto/mutual aid calls in 2009.*

Response standards and performance for 2009 are shown in Table 47, below.

Table 47: Response Standards and Performance for 2009

Measure	Standard*	Actual Performance
<b>Emergency calls – non-medical</b>	8 min for 80% of calls	8 min for 82% calls
<b>Emergency calls - medical</b>	90%	95%

*\* Response standards for non-medical emergency calls are established by the department. The County EMS agency has established the 90% compliance standard for medical emergency calls; this standard applies to each category, i.e., urban, suburban, etc.*

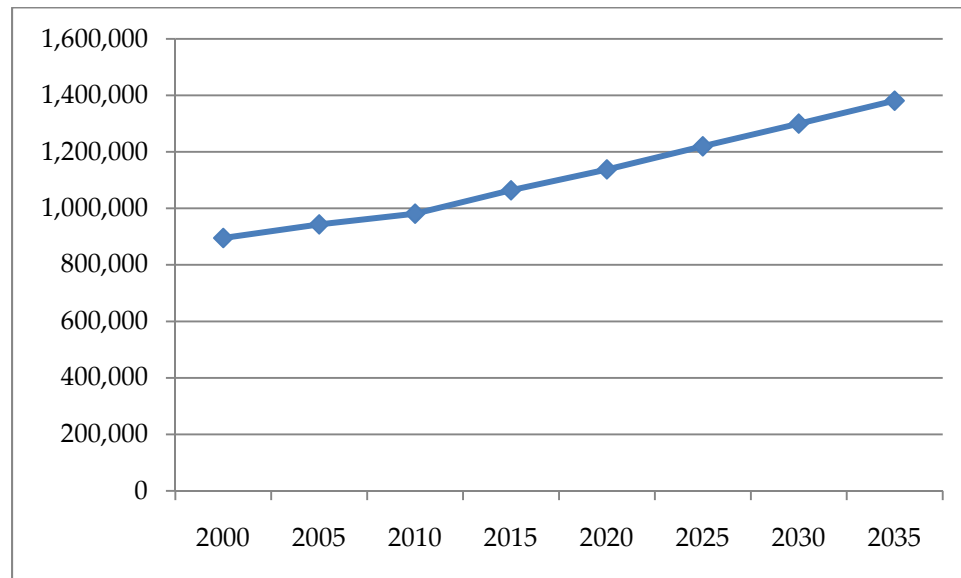
The ISO rating in the city varies from 3 to 9 depending upon proximity to suppression resources. The standards of cover approach is used to determine the resources that are necessary to meet service standards.

The department has a fire marshal and Fire Prevention Bureau that is based on a cost recovery budget. The department has an accredited and state-approved training facility. State fire marshal training is available and open to other agencies.

#### 4.6.9 Trends and Projections

San José's population is projected to grow 41% during the next 25 years to approximately 1,381,000 (an annualized rate of 1.6%). Figure 34 shows the expected population growth between 2000 and 2035.

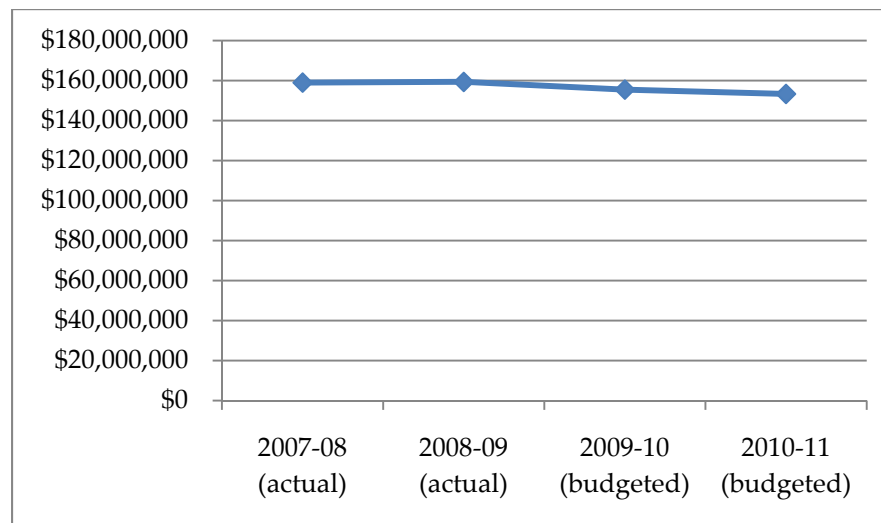
Figure 34: Projected Population City of San José 2000 to 2035



Source: Association of Bay Area Governments

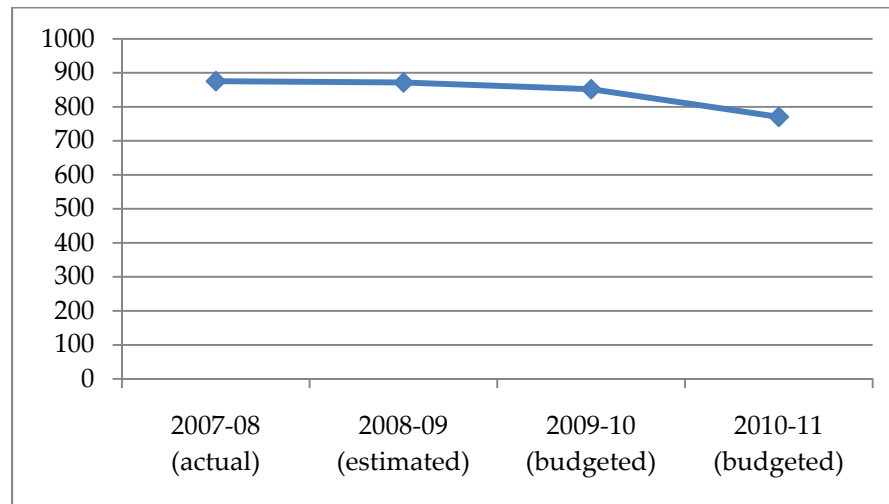
Fire department expenditures have decreased by approximately 4% from FY 2007-08 to FY 2010-11, as shown in Figure 35.

Figure 35: Expenditures and Budget 2007-08 to 2010-11

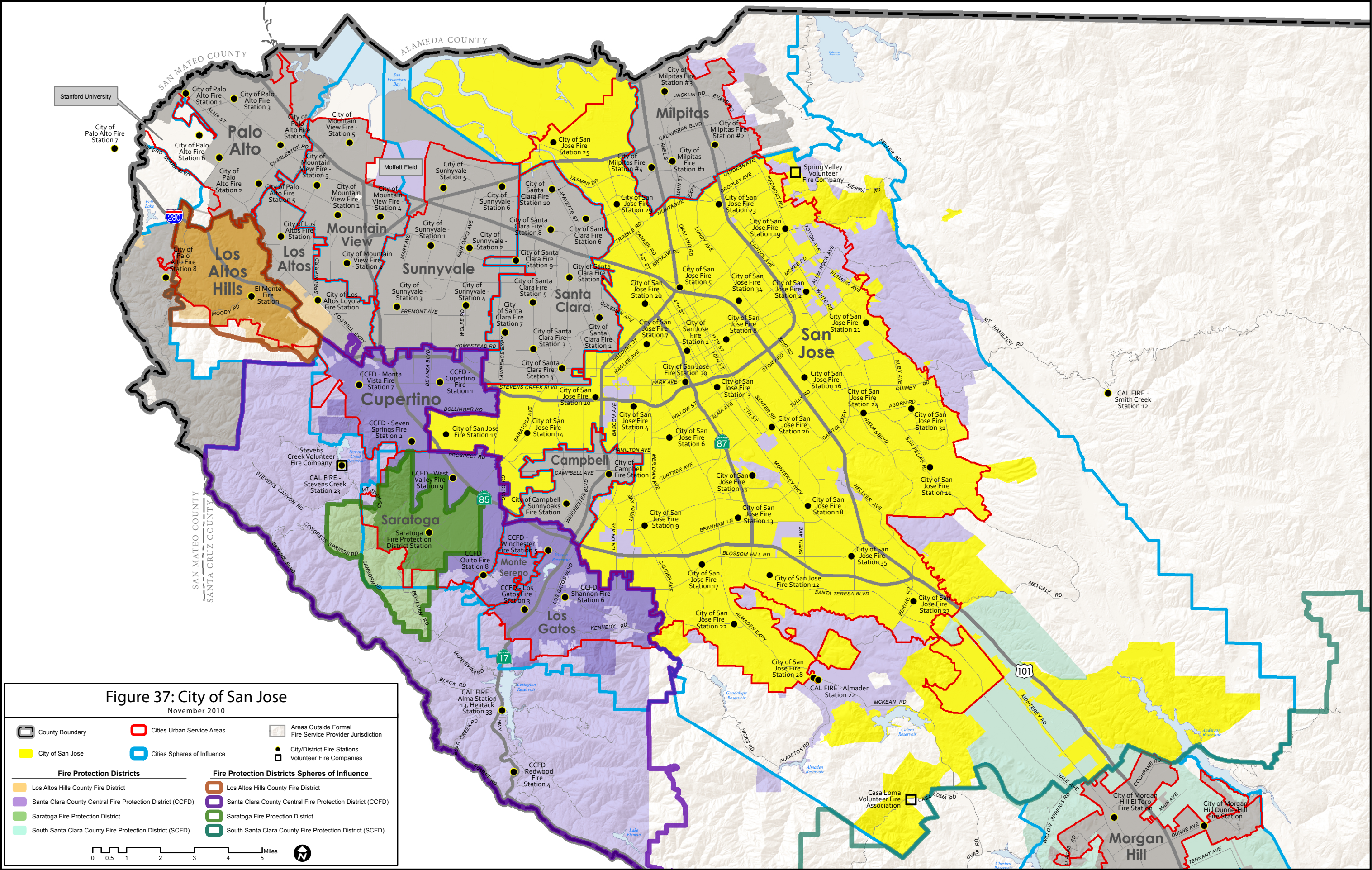


Over the past four years, staffing has decreased by 12%, from 875.48 to 770.48, as shown in Figure 36.

Figure 36: Staffing 2007-08 to 2010-11









*This page intentionally left blank*