

4.5 City of Palo Alto Fire Department

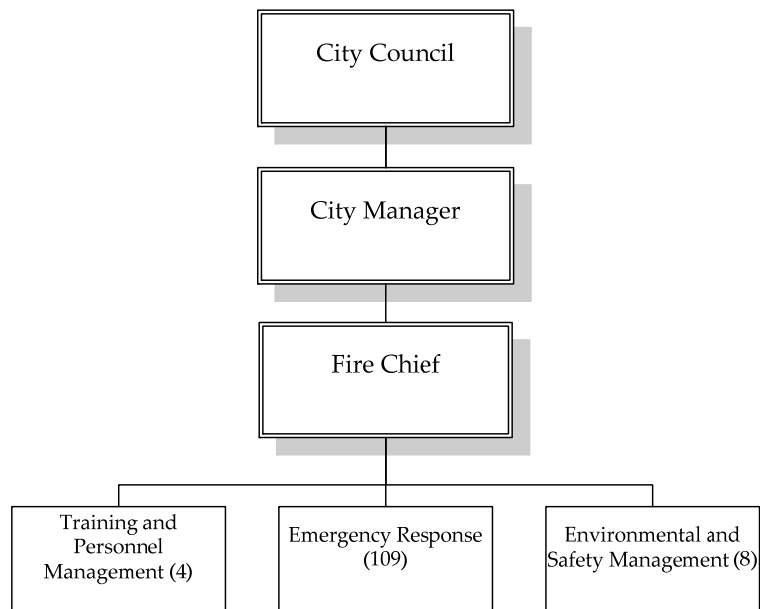
4.5.1 Overview

The Palo Alto Fire Department provides fire protection and emergency medical service to a population of 61,600 within the 23 square miles of the city limits and to approximately 16,180 additional residents living in adjacent unincorporated areas, primarily Stanford University. Figure 31 is a map depicting the boundaries and fire station locations of the City of Palo Alto.

Palo Alto is a charter city with a nine-member City Council, operating with a council-manager form of government. The Fire Chief reports to the City Manager. Pursuant to state law granting an exception to cities providing ambulance transport before counties were given the authority over EMS service, the City provides ambulance response and transport.

The department organization chart is shown in Figure 26.

Figure 26: Fire Department Organization Chart



4.5.2 Budget

Approximately two-thirds of the fire department's budget is funded by the City's General Fund; one-third is derived from contracts for services with Stanford and the Stanford Linier Accelerator and fees, primarily ambulance charges. Tables 32

and 33 display budgeted expenditures by function and type respectively, as reported by the FY 2010-11 budget.⁴

Table 32: Expenditures by Function

Function	Expenditure
Administrative and Management	\$1,527,003
Operations	\$18,959,463
Fire Prevention	\$ 5,389,580
Other	\$ 1,131,441
Total Expenditures	\$27,007,486

Table 33: Expenditures by Type

Type	Expenditure
Salaries and Benefits	\$23,294,330
Operations and Maintenance	\$3,468,709
Subtotal Operations	\$26,763,039
Capital	\$244,447
Total Expenditures	\$27,007,486

4.5.3 Stations

The City maintains eight stations, five of which are in fair condition requiring maintenance; three are in poor condition with two not meeting essential building standards (Stations 3 and 4).

4.5.4 Staffing

As shown in Table 34, the department has 121 FTEs of which 113 are sworn positions. Minimum staffing is three per engine, three per truck, three per rescue and two per ambulance. All engines are staffed with a paramedic. Initial deployment to a single alarm structure fire is 18 personnel.

⁴ Not all departments report expenditures by function. Where such a distribution was not included in budget documents, Management Partners asked departments to sort expenditures into functions to provide a basis for comparing department expenditures on emergency response activities.

Table 34: Staffing

	Sworn	Non-Sworn	Total
Administrative and Management	4.00	0.00	4.00
Operations	105.00	2.00	107.00
Fire Prevention	3.00	3.00	6.00
Other	1.00	3.00	4.00
Total FTEs	113.00	8.00	121.00

4.5.5 Labor Agreements

Labor agreement information is displayed in Table 35. The Palo Alto labor agreements expired in 2010. The City and unions are currently in negotiations.

Table 35: Labor Agreements

Labor Agreements	Term	Expires
IAFF Local 1319	4 years	June 30, 2010
Palo Alto Fire Chiefs' Association	4 years	June 30, 2010

4.5.6 Benefits

Pension and health benefits for sworn personnel are shown in Table 36 below.

Table 36: Benefits

Benefits	
Pension	CalPERS 3% @ 50
Health	PEMHCA - City pays up to second highest cost plan

4.5.7 Apparatus

The department staffs seven engines (plus one used in summer only), one truck, one rescue, two ALS ambulances and one BLS ambulance. In reserve, the department has three engines, one ambulance, one rescue and a truck that is shared with Mountain View. Engines are replaced at 20 years; trucks at 15 years. All apparatus are consistent with the replacement cycle. The City stopped allocating funds to the vehicle replacement fund five to six years ago; approximately \$3.3 million was spent on recent engine replacements. The City's

Public Works Department maintains the apparatus. Table 37 displays the department's apparatus.

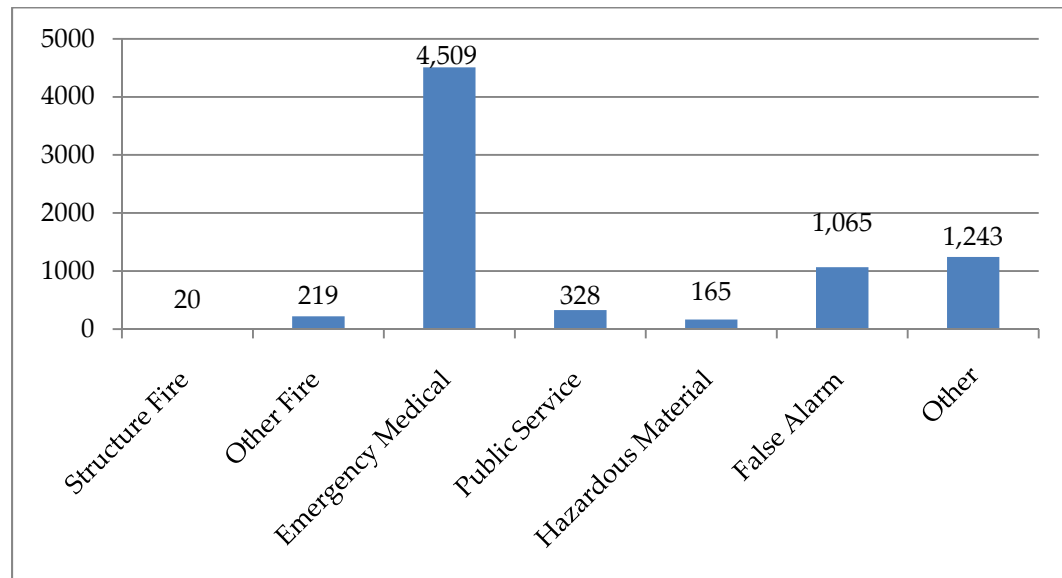
Table 37: Apparatus

Station/Location	Apparatus	Make	Year
1	Engine	Pierce XT	2009
1	Medic Ambulance	Ford	2002
1	BLS Ambulance	Freightliner	1998
1	Reserve Ambulance	Freightliner	1998
2	Engine	Pierce XT	2009
2	Air/Light	KME	2005
2	Heavy Rescue	Pierce Arrow	1992
2	Medic Ambulance	Ford	2002
2	Reserve Patrol	Ford	2001
3	Engine	Pierce XT	2009
3	Reserve Engine	Pierce-Arrow	1991
4	Engine	Pierce XT	2009
4	Reserve Engine	Pierce-Arrow	1991
5	Engine	Pierce XT	2009
5	Reserve Engine	International	1992
6	Engine	Pierce XT	2009
6	Truck	Spartan	1999
6	Reserve Engine	International	1992
6	Reserve Patrol	Ford	2008
7	Engine	Pierce-Arrow	1991
7	Reserve Patrol	Ford	2008
Cubberley	OES	Ford	2000

4.5.8 Service Delivery

Dispatch is provided by the City's Police Department. The department reported 7,549 responses in calendar 2009 of which 4,509 (60%) were EMS calls. All calls for service in 2009 are shown below in Figure 27, according to type of call.

Figure 27: Calls for Service in 2009



The department has mutual and automatic aid agreements with Mountain View, Menlo Park, CCFD, CAL FIRE and the Woodside Fire Protection District in San Mateo County. In 2009, a total of 181 mutual/auto calls were received and a total of 148 calls were provided, as shown below in Table 38.

Table 38: Mutual and Automatic Aid in 2009

Agency	Mutual Aid Received	Automatic Aid Received	Mutual Aid Given	Automatic Aid Given
Mountain View	4	37	4	46
Menlo Park	3	75	0	41
CCFD	3	42	0	47
CAL FIRE	0	2	3	0
Woodside FPD	0	11	0	4
Other	0	4	0	3
Total	10	171	7	141

Table 39 below shows response standards and performance in 2009.

Table 39: Response Standards and Performance for 2009

Measure	Standard*	Actual Performance
Emergency call - non medical	8 minutes 90% of calls	8 min. 91%
Emergency call - medical	12 minutes 90% of calls	12 min. 99%

* Response standards for emergency calls are established by the department.

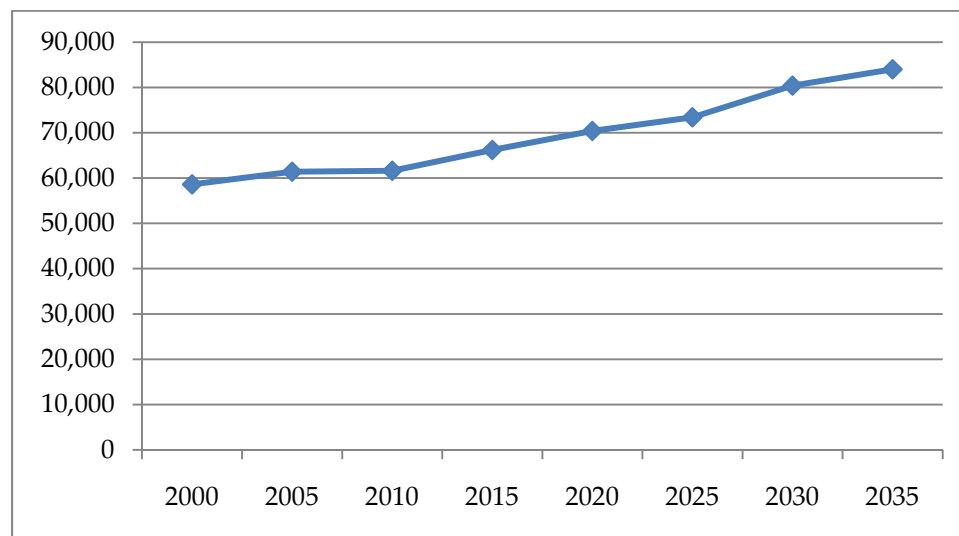
The City has an ISO rating of 2.

The department has a fire marshal and Fire Prevention Bureau that perform construction plan check and inspection, as well as annual business and multi-family inspections. They do not have a public education program. A training captain is supported by suppression captains who serve as training coordinators.

4.5.9 Trends and Projections

Population growth of 36% is projected for the city during the next 25 years, to an estimated 84,800 residents by 2035 (for an annualized rate of 1.4%). Figure 28 shows the projected population growth between 2000 and 2035.

Figure 28: Projected Population City of Palo Alto 2000 to 2035



Source: Association of Bay Area Governments

Fire department expenditures have increased by approximately 13% over the past four fiscal years while staffing has decreased 4% in the same period, as is shown in Figures 29 and 30 below. The increase in expenses is largely attributed to increased employee pension costs.

Figure 29: Expenditures and Budget 2007-08 to 2010-11

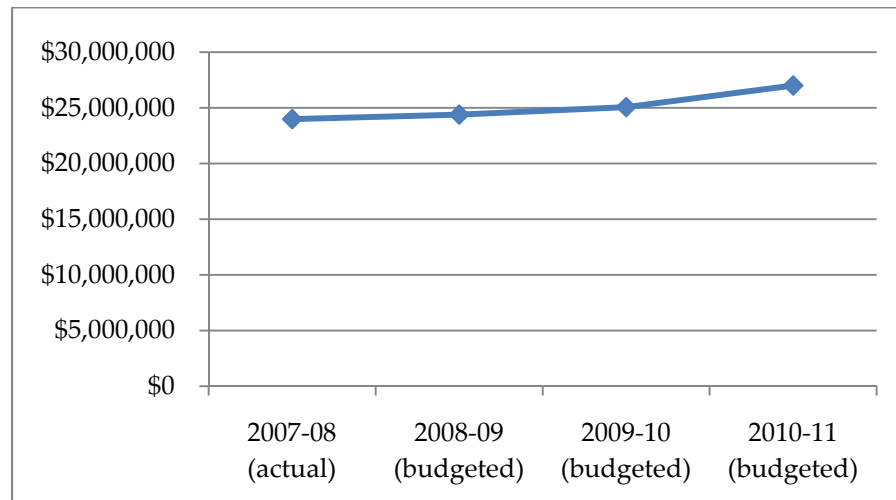


Figure 30: Staffing

