

4.11 City of Sunnyvale Public Safety Department

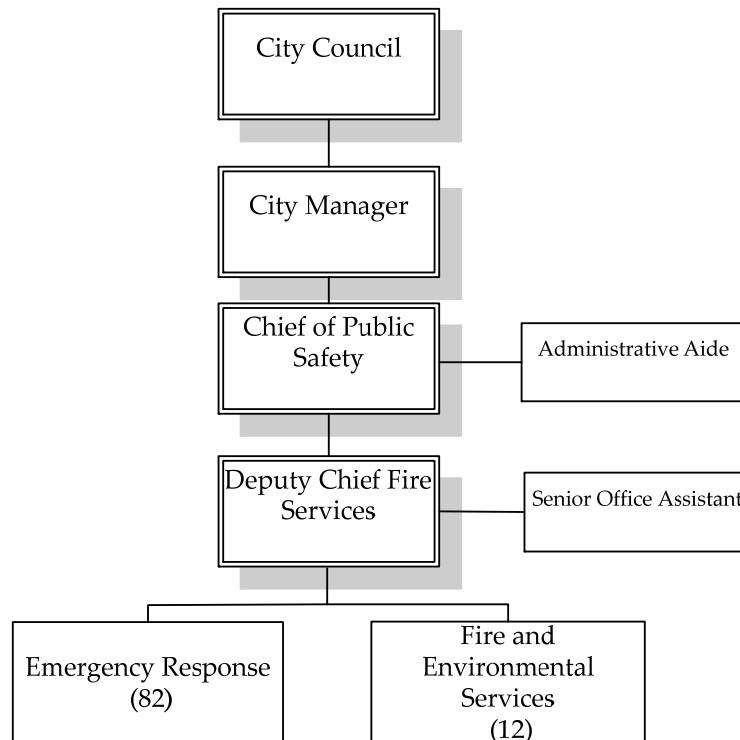
4.11.1 Overview

Fire and emergency medical service in Sunnyvale is provided by the City's Public Safety Department, which combines police and fire functions. The Sunnyvale Public Safety Department provides fire protection and emergency medical service to a 23.8 square mile area with a population of approximately 135,200. Figure 64 is a map depicting the boundaries and fire station locations of the City of Sunnyvale.

Sunnyvale is a charter city with a seven-member City Council, governed by the council-manager form of government. The Deputy Chief is the functional Fire Chief and reports to the Public Safety Director. The Public Safety Director reports to the City Manager. Administrative support functions are combined for police and fire.

The department organization chart is shown in Figure 59.

Figure 59: Sunnyvale Public Safety Department/Fire Division Organization



4.11.2 Budget

The Public Safety Department is funded primarily from the City's General Fund. Tables 76 and 77 display budgeted expenditures by function and type respectively, as reported by the FY 2010-11 budget.¹²

Table 76: Expenditures by Function

Function	Expenditure
Administrative and Management*	\$1,252,118
Operations	\$23,038,979
Fire Prevention	\$751,271
Other	\$0
Total Expenditures	\$25,042,369

*Fire and emergency services are a division of the City's Public Safety department that includes police services. Administrative and management costs for police and fire are combined. The administration and management costs attributed here to fire and emergency services are estimates of the fire proportion of the budget.

Table 77: Expenditures by Type

Type	Expenditures
Salaries and Benefits	\$24,291,048
Operations and Maintenance	\$751,271
Subtotal Operations	\$25,042,369
Capital*	\$0
Total Expenditures	\$25,042,369

*City budget holds all capital assets separate from department budgets.

4.11.3 Stations

The City has six fire stations which were all remodeled between 1998 and 1999.

4.11.4 Staffing

The Sunnyvale Department of Public Safety's Fire Service Division has 100 FTEs, 89 of whom are sworn, as shown in Table 78 below. Public safety officers are trained and certified as police officers, firefighters, apparatus driver-pump

¹² Not all departments report expenditures by function. Where such a distribution was not included in budget documents, Management Partners asked departments to sort expenditures into functions to provide a basis for comparing department expenditures on emergency response activities.

operators and EMTs. Apparatus is staffed with two personnel and supplemented with on-duty police patrol officers who are cross-trained. Six officers respond to standard hazard responses; nine officers to high hazard responses; and two patrol officers to CPR calls. In addition, voluntary off-duty officers can respond to standard and high hazard calls. Initial deployment to a single alarm structure fire is 18 personnel. Sunnyvale provides BLS initial response with ALS paramedic service provided from AMR.

Table 78: Staffing

	Sworn	Non-Sworn	Total
Administrative and Management	4.00	2.00	6.00
Operations	82.00	0.00	82.00
Fire Prevention	3.00	9.00	12.00
Other	0.00	0.00	0.00
Total FTEs	89.00	11.00	100.00

4.11.5 Labor Agreements

Labor agreement information is displayed in Table 79.

Table 79: Labor Agreements

Labor Agreements	Term	Expires
Sunnyvale Public Safety Officers Association	4 years + 2 year extension	June 30, 2012
Sunnyvale Public Safety Managers Association	3 years pending council approval	June 30, 2013
Sunnyvale Employees Association	4 years	June 30, 2012

4.11.6 Benefits

Pension and health benefits for sworn personnel are shown in Table 80 below.

Table 80: Benefits

Benefits	
Pension	CalPERS 3% @ 50. City pays employee 9% and 2.25% for single highest year.
Health	City pays \$515/month towards medical, vision, employee assistance program, optional life insurance. Management has fully-paid medical.

4.11.7 Apparatus

The department has nine engines, two trucks, one rescue Hazmat apparatus and two reserve engines. Engines and trucks are replaced at 20 years. All line apparatus are within the replacement schedule. Replacement funds are budgeted annually. The City's General Services Department maintains fire apparatus. Table 81 displays the department's apparatus.

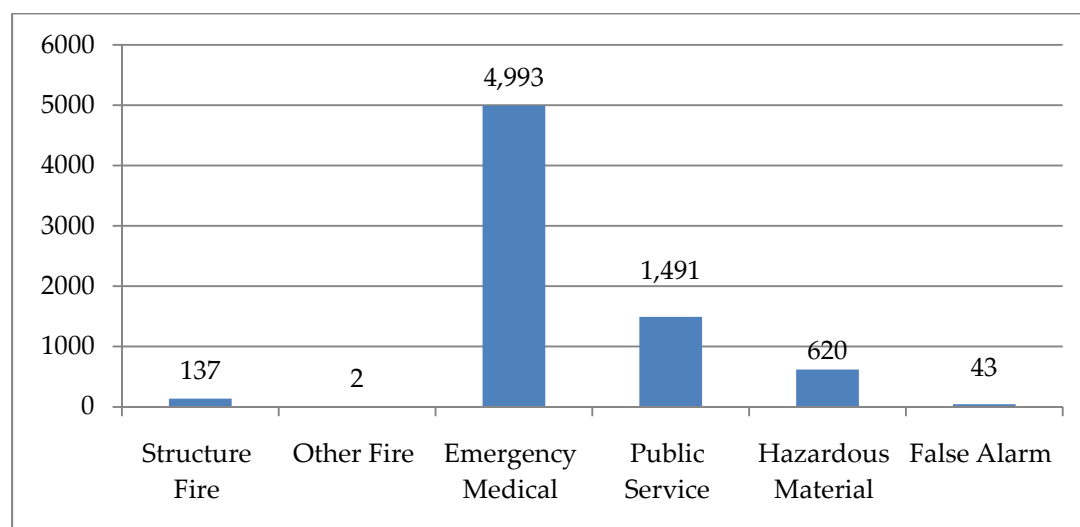
Table 81: Apparatus

Apparatus	Type	Year
Engine 1	Igniter	2008
Truck 1	Eagle 134 Ladder, LTI AH-100	2000
Reserve 1	Eagle	2000
Engine 2	Igniter	2008
Truck 2	Eagle 134 Ladder, LTI AH-100	2000
Rescue 2	Rescue Master	2006
Engine 3	Igniter	2008
Engine 30	Eagle	1998
Engine 4	Igniter	2008
Engine 40	Eagle	2000
Engine 5	Eagle	2004
Reserve 5	Arrow	1987
Engine 6	Eagle	2004
Engine 60	Eagle	1998
BC Vehicle	Expedition	2007

4.11.8 Service Delivery

Communications is provided by the Sunnyvale Department of Public Safety Dispatch division. In 2009, the department responded to 7,286 calls, of which 4,993 (69%) were for EMS. Figure 60 shows all calls for service in 2009 according to type of call.

Figure 60: Calls for Service in 2009



The department has mutual and automatic aid agreements with CCFD, Santa Clara, San José and Mountain View. Table 82 lists mutual and automatic aid reported for 2009.

Table 82: Mutual and Automatic Aid in 2009

Agency	Mutual Aid Received	Automatic Aid Received	Mutual Aid Given	Automatic Aid Given
Mountain View	1	32	3	29
Santa Clara	1	3	2	12
San José	0	7	0	1
Santa Clara County	1	0	2	15
Santa Cruz	0	0	1	0
Scotts Valley	0	0	1	0
Total	3	42	9	57

Table 83 lists response standards and performance for 2009.

Table 83: Response Standards and Performance in 2009

Measure	Standard*	Actual Performance
Emergency calls – non-medical	6 minutes 14 seconds on 93% of calls	95% of calls
Emergency calls - medical	90% standard	97.89%

* Response standards for non-medical emergency calls are established by the department. The County EMS agency has established the 90% compliance standard for medical emergency calls; this standard applies to each category, i.e., urban, suburban, etc.

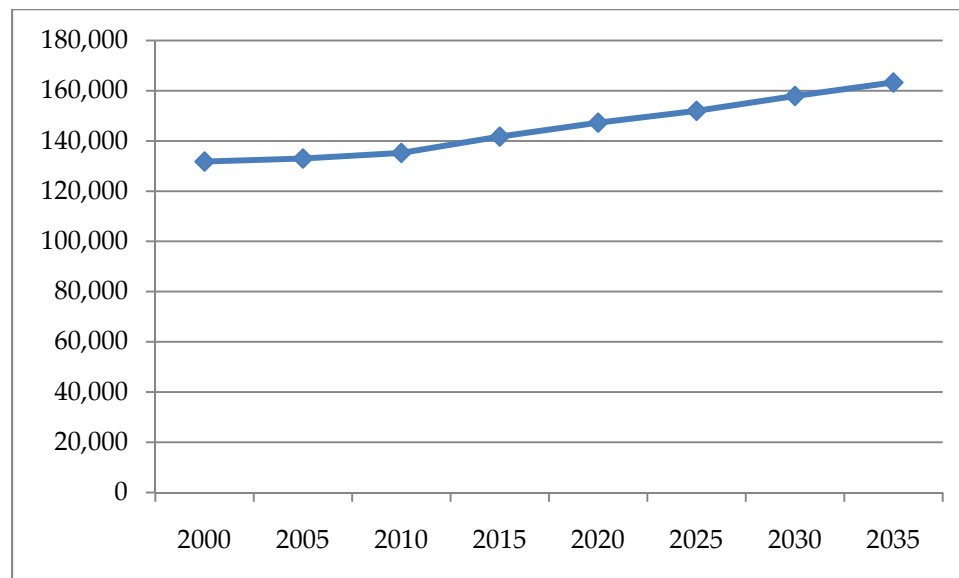
The City has an ISO rating of 2.

The department has a fire marshal and Fire Prevention Bureau. The fire marshal reports to the Fire Services Deputy Chief. The bureau has two divisions: Hazmat and Fire Prevention. The department has a training lieutenant and a training tower .

4.11.9 Trends and Projections

Sunnyvale’s population over the next 25 years is projected to grow by 21% to approximately 163,300 (an annualized rate of .8%), which is shown in Figure 61.

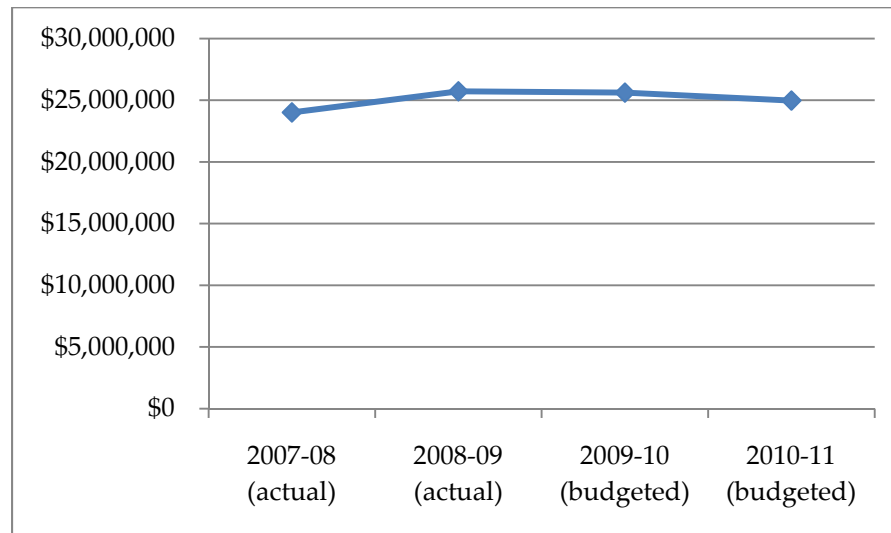
Figure 61: Projected Population City of Sunnyvale 2000 to 2035



Source: Association of Bay Area Governments

Public Safety Department expenditures peaked in FY 2008-09, at \$25,725,754 and have decreased by approximately 3% in FY 2010-11. Figure 62 shows department expenditures during the past four fiscal years.

Figure 62: Expenditures 2007-08 to 2010-11



During the past four fiscal years, staffing has increased from 86 budgeted FTEs to 100 budgeted FTEs (16%), as shown in Figure 63 below. This is due to department reorganization that moved FTEs to Fire from Special Operations; it did not result in any increase in overall department staffing.

Figure 63: Staffing

