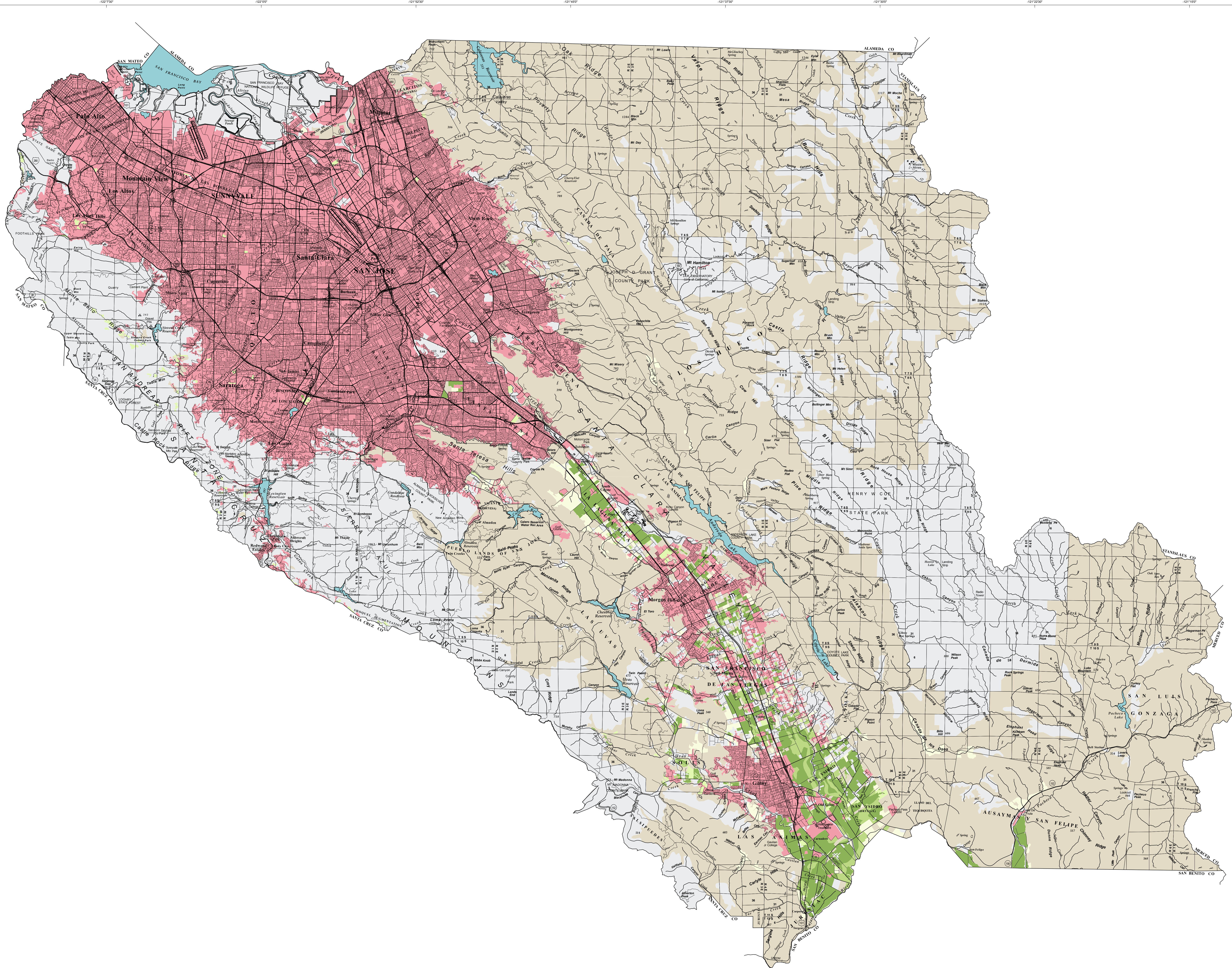




SANTA CLARA COUNTY IMPORTANT FARMLAND 2016



PRIME FARMLAND

PRIME FARMLAND HAS THE BEST COMBINATION OF PHYSICAL AND CHEMICAL FEATURES ABLE TO SUSTAIN LONG-TERM AGRICULTURAL PRODUCTION. THIS LAND HAS THE SOIL QUALITY, GROWING SEASON, AND MOISTURE SUPPLY NEEDED TO PRODUCE SUSTAINED HIGH YIELDS. LAND MUST HAVE BEEN USED FOR IRRIGATED AGRICULTURAL PRODUCTION AT SOME TIME DURING THE FOUR YEARS PRIOR TO THE MAPPING DATE.

FARMLAND OF STATEWIDE IMPORTANCE

FARMLAND OF STATEWIDE IMPORTANCE IS SIMILAR TO PRIME FARMLAND BUT WITH MINOR SHORTCOMINGS, SUCH AS GREATER SLOPES OR LESS ABILITY TO STORE SOIL MOISTURE. LAND MUST HAVE BEEN USED FOR IRRIGATED AGRICULTURAL PRODUCTION AT SOME TIME DURING THE FOUR YEARS PRIOR TO THE MAPPING DATE.

UNIQUE FARMLAND

UNIQUE FARMLAND CONSISTS OF LESSER QUALITY SOILS USED FOR THE PRODUCTION OF THE STATE'S LEADING AGRICULTURAL CROPS. THIS LAND IS USUALLY IRRIGATED, BUT MAY INCLUDE NONIRRIGATED ORCHARDS OR VINEYARDS AS FOUND IN SOME CLIMATIC ZONES IN CALIFORNIA. LAND MUST HAVE BEEN CROPPED AT SOME TIME DURING THE FOUR YEARS PRIOR TO THE MAPPING DATE.

FARMLAND OF LOCAL IMPORTANCE

SMALL ORCHARDS AND VINEYARDS PRIMARILY IN THE FOOTHILL AREAS. ALSO LAND CULTIVATED AS DRY CROPLAND FOR GRAINS AND HAY.

GRAZING LAND

GRAZING LAND IS LAND ON WHICH THE EXISTING VEGETATION IS SUITED TO THE GRAZING OF LIVESTOCK.

URBAN AND BUILT-UP LAND

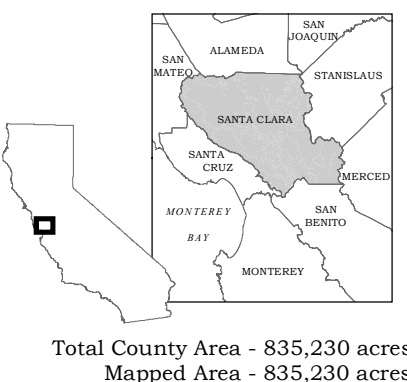
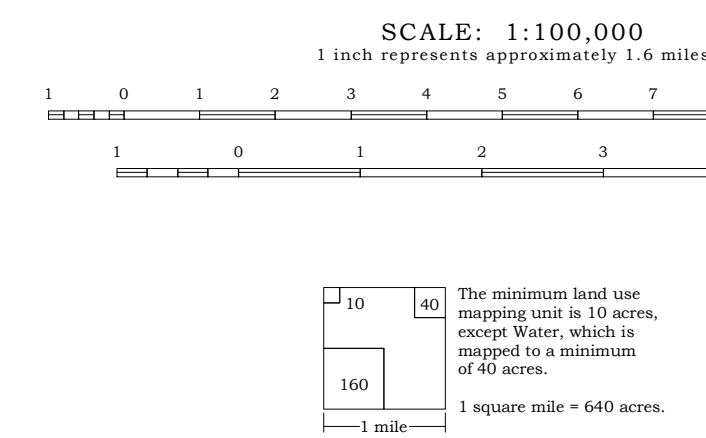
URBAN AND BUILT-UP LAND IS OCCUPIED BY STRUCTURES WITH A BUILDING DENSITY OF AT LEAST 1 UNIT TO 1.5 ACRES, OR APPROXIMATELY 1 STRUCTURE TO A 10-ACRE PARCEL. COMMON EXAMPLES INCLUDE RESIDENTIAL, INDUSTRIAL, COMMERCIAL, INSTITUTIONAL FACILITIES, CEMETERIES, AIRPORTS, GOLF COURSES, SANITARY LANDFILLS, SEWAGE TREATMENT, AND WATER CONTROL STRUCTURES.

OTHER LAND

OTHER LAND IS LAND NOT INCLUDED IN ANY OTHER MAPPING CATEGORY. COMMON EXAMPLES INCLUDE LOW DENSITY RURAL DEVELOPMENTS, BRUSH, TIMBER, WETLAND, AND RIPARIAN AREAS NOT SUITABLE FOR LIVESTOCK GRAZING, CONFINED LIVESTOCK, POULTRY, OR AQUACULTURE FACILITIES, STRIP MINES, BORROW PITS, AND WATER BODIES SMALLER THAN 40 ACRES. VACANT AND NONAGRICULTURAL LAND SURROUNDED ON ALL SIDES BY URBAN DEVELOPMENT AND GREATER THAN 40 ACRES IS MAPPED AS OTHER LAND.

WATER

PERENNIAL WATER BODIES WITH AN EXTENT OF AT LEAST 40 ACRES.



Important Farmland Maps are compiled by the Farmland Mapping and Monitoring Program (FMMP) pursuant to Section 65570 of the California Government Code. To create the maps, FMMP combines current land use information with U.S. Department of Agriculture-Natural Resources Conservation Service (NRCS) soil survey data. Soil units qualifying for Prime Farmland and Farmland of Statewide Importance are determined by the NRCS. Changes to soil profiles subsequent to publication of NRCS Gridded Soil Survey Geographic (GSSURGO) Database for California, November 29, 2016 are not reflected on this map. This map was developed using NRCS gridded digital soil data (GSSURGO) and may contain individual soil units less than one acre.

Land use status is determined using current and historic aerial imagery, supplemental GIS data, and field verification. Imagery sources may include public domain datasets, web-based information, and commercially purchased data, depending on data availability. Supplemental data on land management status is obtained from federal, state, and local governments. Map reviewers at the local level contribute valuable information with their comments and suggestions. Please refer to FMMP field analyst reports for each county to obtain specific citations.

County boundaries for the 2016 Important Farmland Series are from the California Department of Forestry and Fire Protection's Fire and Resource Assessment Program (FRAP) 2009 version of California Counties GIS data. Cultural base information for the Important Farmland Maps was derived from public domain data sets, based upon design of the U.S. Geological Survey, with updates generated by digitizing over current imagery.

This map should be used within the limits of its purpose - as a current inventory of agricultural land resources. This map does not necessarily reflect general plan or zoning designations, city limit lines, changing economic or market conditions, or other factors which may be taken into consideration when land use policies are determined. This map is not designed for parcel-specific planning purposes due to its scale and the ten-acre minimum land use mapping unit. Classification of important farmland and urban areas on this map is based on best available data. The information has been delineated as accurately as possible at 1:24,000-scale, but no claim to meet 1:24,000 National Map Accuracy Standards is made due to variations in the quality of source data.

The Department of Conservation makes no warranties as to the suitability of this product for any particular purpose.

Additional data is available at www.conservation.ca.gov/dlrp/fmmp, including detail on the program, full size PDF maps, map categories, statistics, field summaries, and GIS data for download. Contact the:

Farmland Mapping and Monitoring Program
801 K Street, MS 14-15
Sacramento, CA 95814
Phone: (916) 324-0850
e-mail: fmmp@conservation.ca.gov

© California Department of Conservation, Division of Land Resource Protection, 2018.
Map published September 2018.