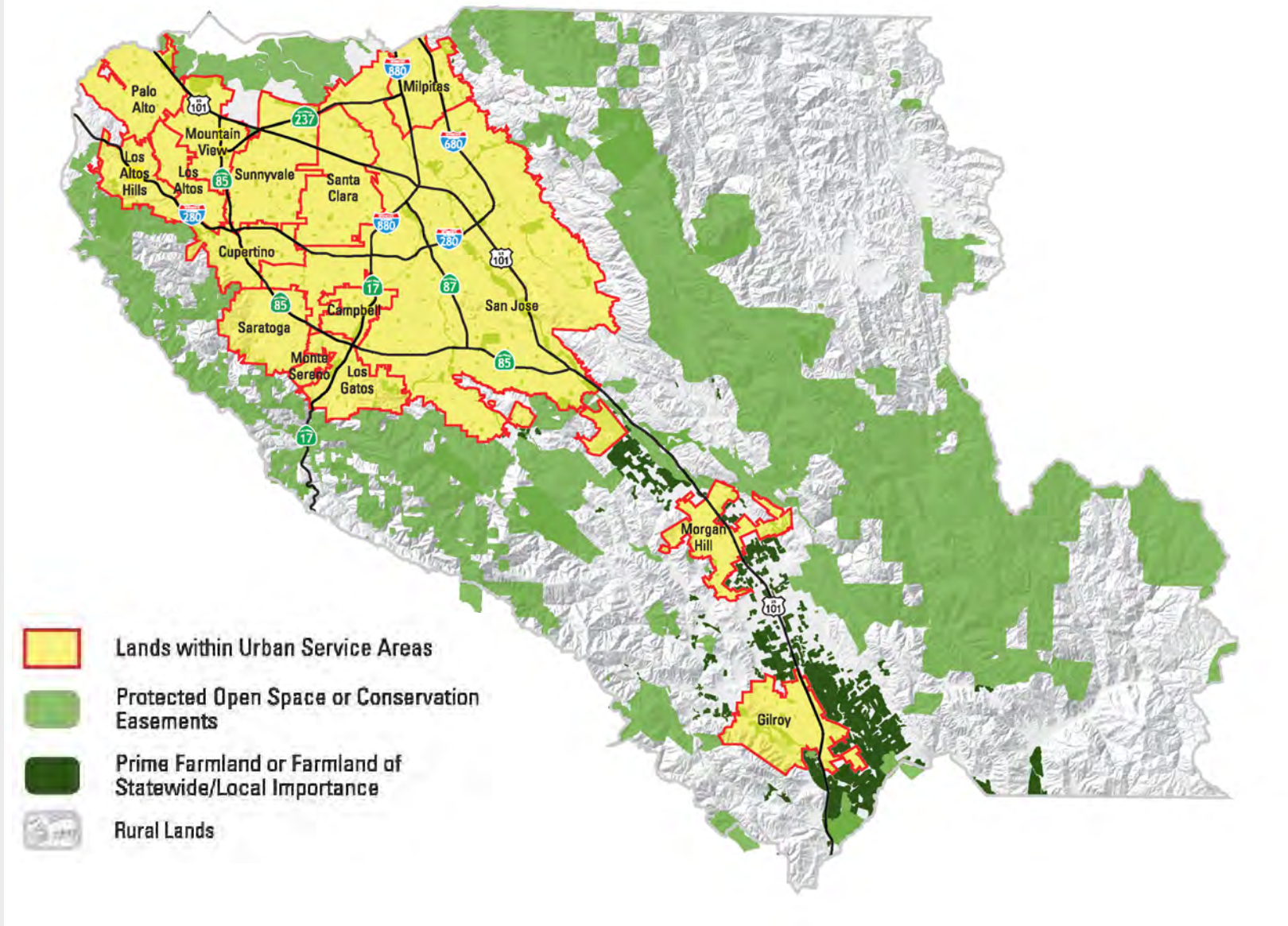
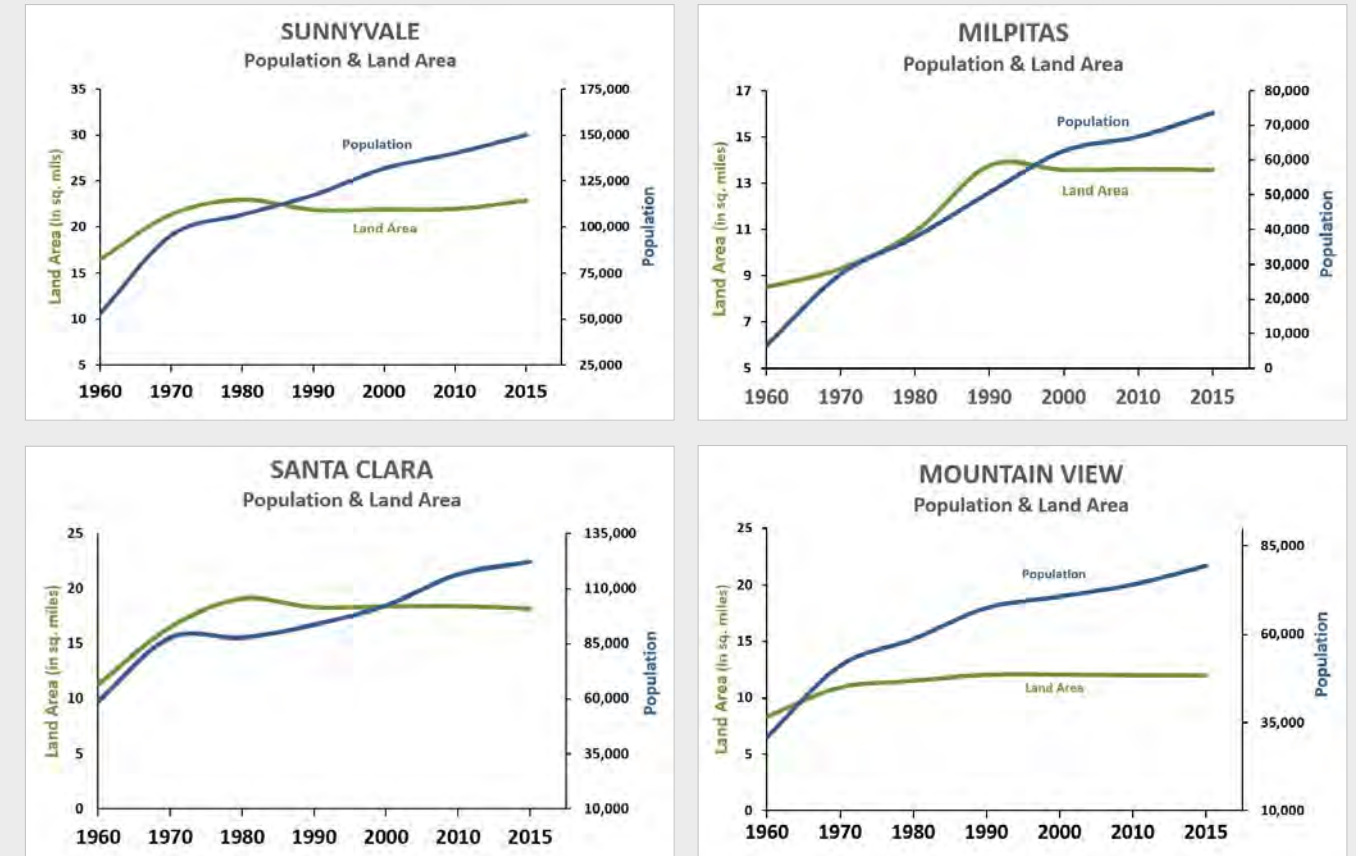


Integrating Development and Conservation

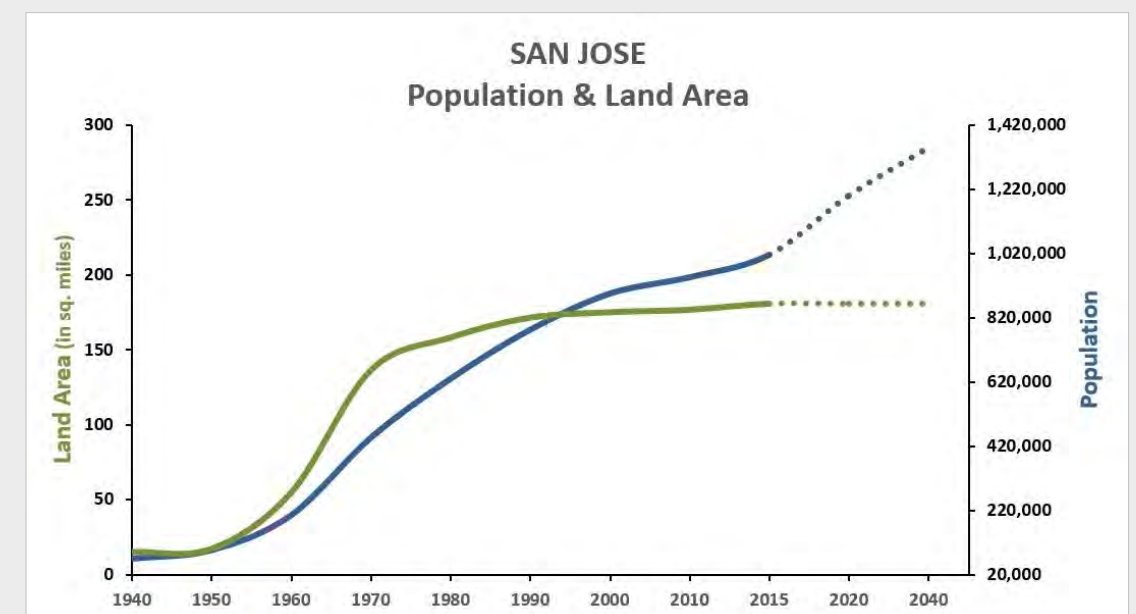
Limiting Urban Sprawl and Conserving Resource Lands



Between 1990 and 2015, many cities, through infill development of vacant, underutilized lands, have added tens of thousands in population with little to no increase in land area.



San Jose's current General Plan does not anticipate outward expansion of its boundaries to accommodate growth through 2040.



When LAFCO was created in 1963, the county was facing great pressure to convert its farmlands to accommodate its growing population. Working together, LAFCO, the County and the 15 cities, developed a **countywide policy framework** for making land-use decisions that promote orderly growth and development. The implementation of these policies has enabled the county to continue to grow and prosper economically while also supporting the availability of farmland and open space lands in close proximity to urbanized areas – a balance that is crucial to ensuring the future livability of our communities.